

# Инверсно-магнетронные вакуумные датчики AIM, AIM200, активные ионные датчики AIGX, датчики широкого диапазона WRG, WRG200

## Технические характеристики

По вопросам продаж и поддержки обращайтесь:

Алматы (727)345-47-04  
Ангарск (3955)60-70-56  
Архангельск (8182)63-90-72  
Астрахань (8512)99-46-04  
Барнаул (3852)73-04-60  
Белгород (4722)40-23-64  
Благовещенск (4162)22-76-07  
Брянск (4832)59-03-52  
Владивосток (423)249-28-31  
Владикавказ (8672)28-90-48  
Владимир (4922)49-43-18  
Волгоград (844)278-03-48  
Вологда (8172)26-41-59  
Воронеж (473)204-51-73  
Екатеринбург (343)384-55-89

Иваново (4932)77-34-06  
Ижевск (3412)26-03-58  
Иркутск (395)279-98-46  
Казань (843)206-01-48  
Калининград (4012)72-03-81  
Калуга (4842)92-23-67  
Кемерово (3842)65-04-62  
Киров (8332)68-02-04  
Коломна (4966)23-41-49  
Кострома (4942)77-07-48  
Краснодар (861)203-40-90  
Красноярск (391)204-63-61  
Курск (4712)77-13-04  
Курган (3522)50-90-47  
Липецк (4742)52-20-81

Магнитогорск (3519)55-03-13  
Москва (495)268-04-70  
Мурманск (8152)59-64-93  
Набережные Челны (8552)20-53-41  
Нижний Новгород (831)429-08-12  
Новокузнецк (3843)20-46-81  
Ноябрьск (3496)41-32-12  
Новосибирск (383)227-86-73  
Омск (3812)21-46-40  
Орел (4862)44-53-42  
Оренбург (3532)37-68-04  
Пенза (8412)22-31-16  
Петрозаводск (8142)55-98-37  
Псков (8112)59-10-37  
Пермь (342)205-81-47

Ростов-на-Дону (863)308-18-15  
Рязань (4912)46-61-64  
Самара (846)206-03-16  
Санкт-Петербург (812)309-46-40  
Саратов (845)249-38-78  
Севастополь (8692)22-31-93  
Саранск (8342)22-96-24  
Симферополь (3652)67-13-56  
Смоленск (4812)29-41-54  
Сочи (862)225-72-31  
Ставрополь (8652)20-65-13  
Сургут (3462)77-98-35  
Сыктывкар (8212)25-95-17  
Тамбов (4752)50-40-97  
Тверь (4822)63-31-35

Тольятти (8482)63-91-07  
Томск (3822)98-41-53  
Тула (4872)33-79-87  
Тюмень (3452)66-21-18  
Ульяновск (8422)24-23-59  
Улан-Удэ (3012)59-97-51  
Уфа (347)229-48-12  
Хабаровск (4212)92-98-04  
Чебоксары (8352)28-53-07  
Челябинск (351)202-03-61  
Череповец (8202)49-02-64  
Чита (3022)38-34-83  
Якутск (4112)23-90-97  
Ярославль (4852)69-52-93

Россия +7(495)268-04-70

Казахстан +7(727)345-47-04

Беларусь +(375)257-127-884

Узбекистан +998(71)205-18-59

Киргизия +996(312)96-26-47

эл.почта: [ewc@nt-rt.ru](mailto:ewc@nt-rt.ru) || сайт: <https://edwards.nt-rt.ru/>

## AIM- Active Inverted Magnetron Gauge

10 <sup>-10</sup>	10 <sup>-9</sup>	10 <sup>-8</sup>	10 <sup>-7</sup>	10 <sup>-6</sup>	10 <sup>-5</sup>	10 <sup>-4</sup>	10 <sup>-3</sup>	10 <sup>-2</sup>	10 <sup>-1</sup>	1	10	10 <sup>2</sup>	10 <sup>3</sup>
Ultra High Vacuum		High Vacuum				Medium Vacuum			Low Vacuum				

**Edwards Active Inverted Magnetron (AIM) Gauges provide accurate measurement over the vacuum range of  $1 \times 10^{-2}$  to  $1 \times 10^{-9}$  mbar. These gauges have proved to be rugged and reliable in a wide range of applications, ranging from scientific instruments to industrial processes.**

The AIM-X Gauge is an inverted magnetron gauge head and gauge controller combined into a single compact unit, and features a linear output for easy integration with a computer or PLC.

The XL variants have a very low external magnetic field, these are ideally suitable for use with sensitive analytical instruments or in applications where the gauge needs to be mounted in close proximity to a turbomolecular pump.



### Features and benefits

- Drive electronics combined in the gauge head
  - Reduce the system cost
  - Save valuable rack space
- Wide-range, regulated, internal power supply
  - Runs from standard d.c. power supplies +13.5 to +36 V
  - Tolerant to voltage fluctuations
- Standard analog output 0 to +10 V d.c. and gauge identifier
  - Easy to interface with a computer or PLC
  - Fault output indication
- Low output impedance and integral Faraday shield
  - Provide high level of noise immunity
  - Permit long cable runs (up to 100 m)
- Interchangeable body tube
  - Rapid tube replacement without pre-calibration
  - Electrode service kit allows user cleaning and maintenance
- Bakeable Tube
  - The DN40CF tube is bakeable to 300 °C (with the electronics removed)
- Unique striker design
- Ensures rapid striking even at high vacuum or in contaminating conditions
- CSA, C/US Approved
  - Meets safety requirements for electrical equipment for measurement

### Technical data

Performance	
Pressure range	10 <sup>-2</sup> to 10 <sup>-9</sup> mbar
Accuracy	Typically +/- 30%
Max overpressure	10 bar absolute (145 psi)
Power supply	+13.5 to +36 V d.c. (max 1 V ripple)
Power consumption	2 W maximum
Output signal	2 to 10 V d.c.
Enclosure rating	IP40
Dimension mm (NW25)	79 x 79 x 116
Temperature range	
Operating	+5 to +60 °C
Storage	0 to +70 °C
Maximum bakeout temperature with electronics removed	NW25 70 °C DN40CF 300 °C

### Order information

Active Inverted Magnetron Gauges	Order number
AIM-X-NW25	D14642000
AIM-XL-NW25	D14645000
AIM-X-DN40CF	D14662000
AIM-XL-DN40CF	D14665000
Replacement body tube assembly	
NW25	D14545801
DN40CF	D14661801
Body tube service kit	
NW25	D14545802
DN40CF	D14661802

## AIGX- Active Ion Gauge

10 <sup>-10</sup>	10 <sup>-9</sup>	10 <sup>-8</sup>	10 <sup>-7</sup>	10 <sup>-6</sup>	10 <sup>-5</sup>	10 <sup>-4</sup>	10 <sup>-3</sup>	10 <sup>-2</sup>	10 <sup>-1</sup>	1	10	10 <sup>2</sup>	10 <sup>3</sup>
Ultra High Vacuum		High Vacuum				Medium Vacuum			Low Vacuum				

The Active Ion Gauge (AIGX) is a compact active ion gauge with dual yttria coated iridium filaments, a wide measuring range from  $6.6 \times 10^{-2}$  to  $6.6 \times 10^{-10}$  mbar and a 1 Volt/decade linear output.

The AIGX incorporates all benefits of the industry standard active gauging concept, with integral electronics and replaceable tube. The gauge has a degas facility and includes features to protect and extend the life of the filaments. The AIGX benefits from extremely low emissions of charged particles, which makes it an excellent choice for processes where background noise is undesirable.



### Features and benefits

- Full 8-decade measurement capability, to  $6.6 \times 10^{-10}$  mbar ( $5 \times 10^{-10}$  Torr)
- Two versions available, each with three vacuum coupling variants:
  - ‘D’ versions have a 9-pin ‘D’ connector and standard interface
  - ‘S’ versions have enhanced functionality and are fully compatible with the range of Edwards controllers
- Up to a thirty-fold reduction in charged particle process contamination compared to leading competitors
- Automatic filament protection against switching on at atmosphere and running or degassing at high pressure
- Gauge sensitivity remains constant over the whole measuring range, thus maintaining output accuracy at higher pressures
- Continuous pressure measurement output during degas
- Innovative design eliminates the effects of X-ray limits
- Bi-colour LED gives local indication of gauge status.
- Wide input voltage range
- Electronics very easily removable for bakeout at up to 200 °C
- ‘S’ versions provided with seamless automatic emission current switching, for prolonged filament life
- ‘S’ versions provided with diagnostic outputs indicating ‘emission off’, ‘broken filament’ and ‘overpressure trip’ to help with troubleshooting
- ‘S’ versions provided with a push-button adjustable set point

### Technical data

Performance	
Pressure range	$6.6 \times 10^{-2}$ to $6.6 \times 10^{-10}$ mbar
Accuracy	Typically +/- 15%
Max overpressure	10 bar absolute (145 psi)
Power supply	+14.5 to +30.0 d.c.
Power consumption	Normal operation: 7W (max) Degas: 14W (max)
Output signal	0.7 V to 8.7 V
Enclosure rating	IP30
Dimension mm (NW25)	70 x 70 x 96
Temperature range	
Operating	0 to +40 °C
Storage	-30 to +70 °C
Maximum bakeout temperature with electronics removed	200 °C

### Order information

AIGX - Active Ion Gauge	Order number
AIGX-S NW25	D04850000
AIGX-S DN16CF	D04851000
AIGX-S DN40CF	D04852000
AIGX-D NW25	D04860000
AIGX-D DN16CF	D04861000
AIGX-D DN40CF	D04862000
Spare electronics module	
AIGX-S - replacement electronics module	D04850800
AIGX-D - replacement electronics module	D04860800

## WRG- Wide Range Gauge

10 <sup>-10</sup>	10 <sup>-9</sup>	10 <sup>-8</sup>	10 <sup>-7</sup>	10 <sup>-6</sup>	10 <sup>-5</sup>	10 <sup>-4</sup>	10 <sup>-3</sup>	10 <sup>-2</sup>	10 <sup>-1</sup>	1	10	10 <sup>2</sup>	10 <sup>3</sup>
Ultra High Vacuum		High Vacuum				Medium Vacuum			Low Vacuum				

The Wide Range Gauge (WRG) family offers the capability of single port pressure measurement in the range atmosphere to 10<sup>-9</sup> mbar, with a linear output.

It's a compact solution, halving the space and connectivity hardware requirement, which can be all important in many applications. The WRG has many novel features, including a patented striker, push-button calibration and set point controls and comprehensive diagnostics. The WRG is a cost-effective vacuum management solution when used either with an Edwards controller or directly integrated into the vacuum system controls.



## Features and benefits

- Single push-button atmosphere setting
- Ultra compact, featuring recessed electrical connector
- Easy service; both Pirani and magnetron elements are individually replaceable
- Low magnetic field version (SL) available for particularly sensitive applications e.g. mass spectrometry and microscopy
- Comprehensive failure mode diagnostics facility
- Compatible with Edwards TIC, TAG and ADC controllers
- D-type version including cable strain relief and enhanced ingress protection (IP44)
- Magnetron uses an advanced technique for highly reliable striking, even at high vacuum or in relatively contaminated conditions
- Automatic vacuum setting of Pirani gauge element
- Easily programmed set point covering entire measuring range
- Extended service intervals and gauge lifetime, through reduction of HT voltage after ignition and low discharge current
- Microprocessor signal processing gives seamless transition between Pirani and magnetron outputs as well as linear output (log pressure scale)

## Technical data

Performance	
Pressure range	10 <sup>3</sup> to 10 <sup>-9</sup> mbar
Accuracy	Typically +/- 15% at <100 mbar +/- 30% at <10 <sup>-3</sup> mbar
Max overpressure	10 bar absolute (145 psi)
Power supply	+14.5 to + 36 V d.c.
Power consumption	2 W maximum
Output signal	1.8 to 10.2 V d.c.
S' and 'SL' versions	IP 40
D' version	IP 44
Dimension mm (NW25)	65 x 65 x 106
Temperature range	
Operating	+5 to +60 °C
Storage	0 to +70 °C
Maximum bakeout temperature with electronics removed	70 °C

## Order information

Wide Range Gauges	Order number
WRG NW25 stainless steel	D14701000
WRG DN40CF stainless steel	D14703000
WRG-SL NW25 low stray magnetic field	D14711000
WRG-D-NW25	D14702000
Electronics and magnet housing	
WRG-S	D14701800
WRG-SL	D14711800
WRG-D	D14702800
Replacement body tube assembly	
NW25	D14701801
DN40CF	D14703801
Electrode assembly kit	D14701802
Pirani tube replacement kit	D14701803
Full body tube service kit	D14701804

## Active gauge cables

Connection cable options	Order number
0.5 m	D40001005
1 m	D40001010
3 m	D40001030
5 m	D40001050

Cables include FCC68/RJ45 compatible connections at both ends.

Connection cable options	Order number
10 m	D40001100
15m	D40001150
25m	D40001250
50m	D40001500

# ACTIVE INVERTED MAGNETRON GAUGE AIM200

**Edwards Active Inverted Magnetron Gauge AIM200 is rugged and reliable and due to its compact size, 360° LED light ring, integrated set-points and flexibility of connections/outputs, is suitable for a wide range of applications from scientific instruments to industrial processes.**

The AIM200 gauge head and gauge controller have been combined into a single compact unit, and features a very low stray magnetic field, coupled with reduced footprint and improved striking mechanism making it the perfect choice for use within analytical applications where the gauge needs to be mounted in close proximity to sensitive equipment.



## Benefits

- 1 Whilst the principle of cold cathode gauging has remained largely unchanged in principle however, the features required onboard the gauge certainly have. With requirements for on gauge set-points, various digital interfaces and adaptive visual aids increasing. Our advanced AIM200 pushes the boundaries further than ever before in a compact package meeting all your needs.
- 2 Everyone wants a reliable vacuum process that works day in, day out, whether being used 24/7 or sporadically. This is something we are able to offer with our advanced active inverted magnetron gauge AIM200. Its cold cathode measuring cell builds upon the long track record in cold cathode gauging to give great accuracy and performance across its lifetime.
- 3 With standardisation becoming ever more common in the vacuum world, having spare parts that can be changed with little to no impact is a key benefit due to the modular platform our AIM200 is built on. Our digital versions of the gauges are in the same footprint as the analogue, allowing for easy future upgrades.
- 4 A part of a gauge's lifetime is its end of life. To ensure that you have minimum downtime and low cost of ownership we have a simple model for replacement electronics and measuring cells so it is easy when a change is required.
- 5 Discover enhanced versatility with our EX NW25 variant featuring an extended tube, enabling seamless compatibility with C-clamps, expanding application possibilities beyond conventional flange limitations.

## Applications

### Analytical instruments

Often pushing the boundaries of what is possible with vacuum, making sure that the process is fully optimised and repeatable is key for the ongoing strive for excellence.

### Semiconductor

Famed for their harsh duties, ensuring that your Fab is running 24/7 even in these conditions is vital. Therefore strict monitoring of all parts can ensure maximum uptime.

### Medical

All kinds of medical and medical related processes rely on differing levels of vacuum at different process steps. Accurately and reliably measuring these steps is important to ensure a consistent output.

## Features

### 1 360° LED light ring visual pressure indicator

The LED light ring not only displays basic adaptive “working/not working” information, it also gives the user precise pressure feedback via the light rings pulsing patterns. The indicator is also used to help guide you through the menu setup.



### 5 Wide range power supply

This gauge boasts a broad power input range of 15-48Vdc, making it one of the most versatile options in the market. Integration into your systems is made effortless and stress-free, as there is no need for an additional power supply unit.



### 2 Reduced footprint

The AIM200 is compact in size, therefore making it a perfect choice of gauge in those applications where real-estate is at a premium.



### 6 Drop in compatible

We know the last thing you want to do is change software/carry out lengthy qualification or have to start changing your set-ups. Therefore we have made sure that we provide variants to cover the most commonly used outputs so upgrading is even easier.



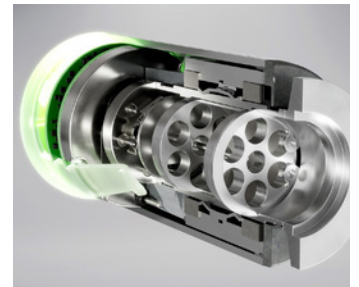
### 3 Multipoint star striker

Our innovative gauge is equipped with technology that allows the gauge to strike even in the most heavily contaminated of environments.



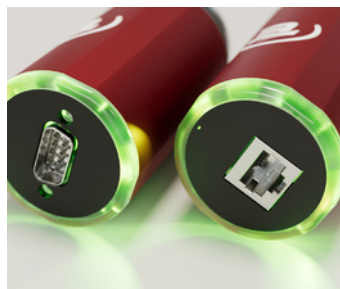
### 7 New magnets

The advanced magnets have allowed us to reduce our stray field/interference making the AIM200 reliable and safe to use in environments where the gauge is in close proximity to sensitive equipment.



### 4 Analogue/digital

A choice of D-Sub or RJ45 for our analogue variants for processes that prefer a “lockable” connector to our digital gauges that sit in the same footprint, making it easy for you to upgrade at a later date should more data collection/control be required.



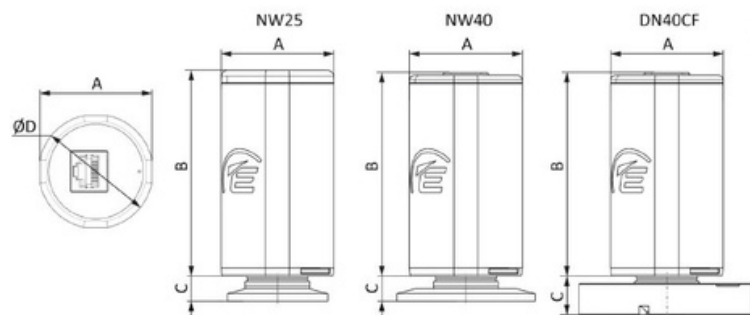
### 8 Set-point relay

For the first time on an Edwards gauge we have dedicated set-point relays available, enabling you to trigger a wide range of knock on actions.





## DIMENSIONS



	Dimensions (mm)			
Flange	A	B	C	D
NW25	45	82	10	46
NW40	45	81.5*	10	46
DN40CF	45	81.5*	15.5	46
NW25 (extended tube)	45	82	22	46

\*The 9 pin D-SUB (female) connector is 0.5 mm shorter than the RJ45 variant.

## TECHNICAL SPECIFICATIONS

	AIM200
Measurement type	INVERTED MAGNETRON
Measuring range (mbar)	1x10 <sup>-9</sup> up to 1x10 <sup>-2</sup>
Accuracy (N <sub>2</sub> )	<30% measured value from 1x10 <sup>-9</sup> to 1x10 <sup>-2</sup>
Supply voltage	15-48V
Electrical connection	RJ45, and 9 pin D-Sub
Analogue output (D2G0**1***)	0-10V
Serial output (D2G0**5***/D2G0**0***)	RS232 or RS485
Set-point	0 or 1
Relay contact rating	48 V dc max, 500mA
Status indicators	360° Bright LED ring
Max cable length	100 m
Operating temp	0 to 50°C
Bake out temp	150°C WITH ELECTRONICS REMOVED
Max relative humidity	80% RH up to 31°C decreasing linearly to 50% RH at 40°C and above
Materials exposed to vacuum	Stainless steel 304, 304L, 316L, 347, 430, Ni-Fe and glass
Dead volume	20 cm <sup>3</sup>
Weight (NW25)	350 grams
IP rating	IP40
Certifications	UKCA, CE, UL
Compatible controllers	TIC, ADC, TAG
Sealing	Glass/metal
Comms	Analogue or digital RS232/485 variants
Admissible pressure	10 Bar
Backwards compatibility	Yes
Dimension (NW25)	92x45x45
Software	LABVIEW DRIVERS
Output matching	Yes
Flanges	NW25, NW40, DN40CF
Service	Replaceable measuring tube, replaceable electronics/magnet assembly

## PART NUMBER MATRIX

Prefix	-	Set-point	Flange	Comms	Connector	Output	Other
D2G	0	0 = 0 Set point [2]	2 = NW25	1 = 0-10V output	1 = RJ45	0 = Standard Edwards	0 = standard
		1 = 1 Set point [1]	3 = NW40	5 = RS232	2 = 9-Pin D-Sub	2 = 0.667 to 10.00 V [4]	C = Calibrated
			4 = DN40CF	0 = RS485		3 = 1.5 to 8.50 V [4]	
			5 = EX NW25			4 = 1.50 to 4.4375 V [4]	
						5 = 2.00 to 10V	

### Spare - Tube

	-	Set-point	Flange	Comms	Connector	Output	Other
ZD2G	0	A	2 = NW25	A	A	A	0
			3 = NW40				
			4 = DN40CF				
			5 = EX NW25				

Prefix	-	Set-point	Flange	Comms	Connector	Output	Other
ZD2G	0	0 = 0 Set point [2]	A	1 = 0-10V output	1 = RJ45 [4]	0 = Standard Edwards	0
		1 = 1 Set point [1]		5 = RS232 [1]	2 = 9-Pin D-Sub	2 = 0.667 to 10.00 V [4]	
				0 = RS485 [1]		3 = 1.5 to 8.50 V [4]	
						4 = 1.50 to 4.4375 V [4]	

[1] only available with 9 pin D-Sub

[2] select for backwards compatible transistor output

[3] only with RS232/485

[4] only with analogue 0-10V

## FREQUENTLY USED PART NUMBERS

Analogue	Order no
AIM200 - NW25 - S matched output	D2G0021150
AIM200 - NW25	D2G0021100
AIM200 - XS - NW25 - 9 Pin D-Sub	D2G0121200
AIM200 - DN40CF	D2G0041100

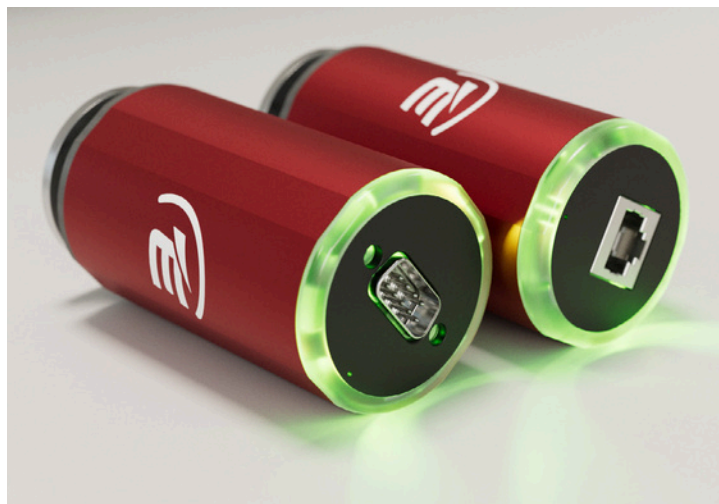
Digital	Order no
nAIM200-X-RS485-NW25-9 Pin DSUB	D2G0020200
nAIM200-X-RS485-DN40CF-9 Pin DSUB	D2G0040200
nAIM200-X-RS232-NW25-9 Pin DSUB	D2G0025200
nAIM200-X-RS232-DN40CF-9 Pin DSUB	D2G0045200



# ACTIVE WIDE RANGE GAUGE WRG200

**The Active Wide Range Gauge WRG200 offers the capability of single port pressure measurement in the range atmosphere to  $10^{-9}$  mbar with a linear output.**

The WRG200 is a compact and efficient solution that significantly reduces the required space and hardware for connectivity. Its compact design makes it ideal for various applications. This gauge has undergone numerous technical improvements such as its innovative striker design, a 360° LED light ring, easy push-button calibration, integrated set-point controls, and comprehensive diagnostics. The WRG200 offers cost-effectiveness as a vacuum management solution, either when used with an Edwards controller or directly integrated into the system controls. This gauge is perfect for monitoring pressure in systems that are rapidly pumped down from atmospheric pressure to high vacuum levels.



## Benefits

- 1 Our advanced wide range gauge uses two key principles to achieve its wide measuring range, inverted magnetron and pirani. Not only has the core of the gauge been redesigned, the features on board the gauge have too! With requirements for set-points, digital interfaces, adaptive visual aids and faster ignition rates. Our new WRG200 pushes the boundaries further than ever before in a compact package meeting all your needs.
- 2 Everyone desires a reliable vacuum process that operates effectively regardless of usage frequency, be it constant or occasional. Our advanced wide range gauge WRG200 offers exactly that. The WRG200, with its filament pirani and inverted magnetron measuring cell, enables us to measure more widely and accurately while maintaining consistent performance throughout the gauge's lifetime. This is a crucial aspect of the gauges effectiveness.
- 3 As standardisation gains prominence in the vacuum industry, having replacement parts that can be easily swapped with minimal impact is a crucial advantage. This is achieved through the modular design of our WRG200 gauge. Our digital gauges have the same dimensions as their analogue counterparts, providing hasslefree future upgrades.
- 4 The end of a gauge's lifetime is a critical aspect to consider. To minimise downtime and ensure low cost of ownership, we have a straightforward model for replacing the electronics and measuring cells. This makes it easy to make changes when necessary, ensuring minimal disruption to your operations.
- 5 Discover enhanced versatility with our EX NW25 variant featuring an extended tube, enabling seamless compatibility with C-clamps, expanding application possibilities beyond conventional flange limitations.

## Applications

### Analytical instruments

By constantly exploring the limits of what can be achieved with vacuum technology, ensuring that the process is optimised and consistent is critical in the pursuit of excellence.

### Semiconductor

Renowned for their challenging duties, it is crucial to ensure that your Fab operates nonstop, even in harsh environments. Regular monitoring of all components can guarantee maximum uptime.

### Medical

In medical and medical-related procedures, vacuum levels play a crucial role at various stages of the process. To guarantee consistent results, it is crucial to measure these levels precisely and dependably.

## Features

### 1 360° LED light ring visual pressure indicator

The LED light ring not only displays basic adaptive “working/not working” information, it also gives the user precise pressure feedback via the light rings’ pulsing patterns. The indicator is also used to help guide you through the menu setup.



### 5 Wide range power supply

This gauge boasts a broad power input range of 15-48Vdc, making it one of the most versatile options in the market. Integration into your systems is made effortless and stress-free, as there is no need for an additional power supply unit.



### 2 Reduced footprint

The WRG200 is compact in size, therefore making it a perfect choice of gauge in those applications where real-estate is at a premium.



### 6 Drop in compatible

We know the last thing you want to do is change software/carry out lengthy qualification or have to start changing your set-ups. Therefore we have made sure that we provide variants to cover the most commonly used outputs so upgrading is even easier.



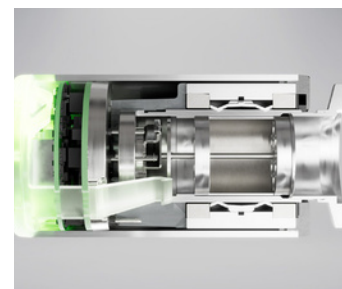
### 3 Filament technology

Our new cold cathode filament technology will provide you reliable solution no matter your environment or application. The additional striker allows the gauge to strike in heavily contaminated environments therefore making this gauge the perfect choice for dirty processes.



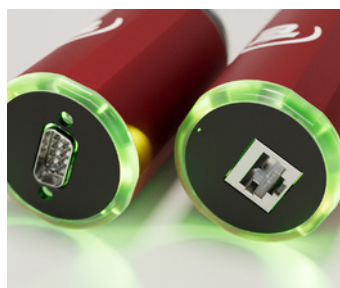
### 7 New magnets

The advanced magnets have allowed us to reduce our stray field/interference making the WRG200 reliable and safe to use in environments where the gauge is in close proximity to sensitive equipment, especially when measuring over a wider range.



### 4 Analogue/digital

A choice of D-Sub or RJ45 for our analogue variants for processes that prefer a “lockable” connector to our digital gauges that sit in the same footprint, making it easy for you to upgrade at a later date should more data collection/control be required.

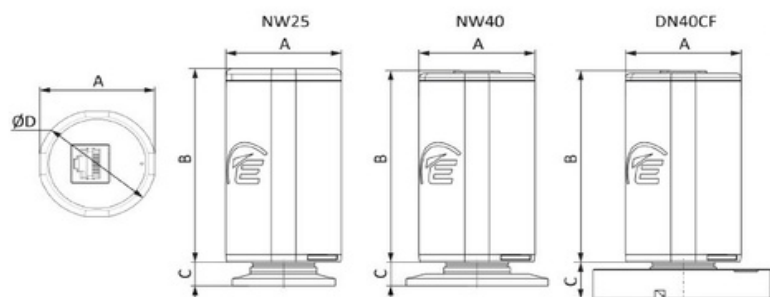


### 8 Set-point relay

For the first time on an Edwards gauge we have a dedicated set-point relay available, enabling you to trigger a wide range of knock on actions.



## DIMENSIONS



	Dimensions (mm)			
Flange	A	B	C	D
NW25	45	82	10	46
NW40	45	81.5*	10	46
DN40CF	45	81.5*	15.5	46
NW25 (extended tube)	45	82	22	46

\*The 9 pin D-SUB (female) connector is 0.5 mm shorter than the RJ45 variant.

## TECHNICAL SPECIFICATIONS

	WRG200
Measurement type	Inverted Magnetron + Pirani
Measuring range (mbar)	1x10 <sup>-9</sup> to 1000 mbar
Accuracy (N <sub>2</sub> )	<30% measured value from 1x10 <sup>-9</sup> to 1x10 <sup>-3</sup> <15% measured value from 1x10 <sup>-3</sup> to 10mbar
Supply voltage	15-48V
Electrical connection	RJ45, and 9 pin D-Sub
Analogue output (D3G0**1***)	0-10V
Serial output (D3G0**5***/D3G0**0***)	RS232 or RS485
Set-point	0 or 1
Relay contact rating	48 V dc max, 500mA
Status indicators	360° Bright LED ring
Max cable length	100 m
Operating temp	0 to 50°C
Bake out temp	150°C WITH ELECTRONICS REMOVED
Max relative humidity	80% RH up to 31°C decreasing linearly to 50% RH at 40°C and above
Materials exposed to vacuum	Stainless steel 304, 304L, 316L, 347, 430, Ni-Fe, glass, tungsten
Dead volume	20 cm <sup>3</sup>
Weight (NW25)	350 grams
IP rating	IP40
Certifications	UKCA, CE
Compatible controllers	TIC, ADC, TAG
Sealing	Glass/metal
Comms	Analogue or digital RS232/485 variants
Admissible pressure	10 Bar
Backwards compatibility	Yes
Dimensions (mm) (NW25)	92x45x46
Software	LABVIEW DRIVERS
Output matching	Yes
Flanges	NW25, EX NW25, NW40, DN40CF
Service	Replaceable measuring tube, replaceable electronics/magnet assembly

## PART NUMBER MATRIX

Prefix	-	Set-point	Flange	Comms	Connector	Output	Other
D3G	0	0 = 0 Set point <sup>[2]</sup>	2 = NW25	0 = RS485 <sup>[1]</sup>	1 = RJ45 <sup>[3]</sup>	0=Edwards standard 2.00 to 10.00 V	0 = standard
		1 = 1 Set point	3 = NW40	1 = 0-10V output	2 = 9 Pin D-Sub	2 = 1.4 to 8.60 V	C = Calibrated
			4 = DN40CF	5 = RS232 <sup>[1]</sup>		4 = 1.50 to 6.9375 V	
			5 = EX NW25			5 = 2.00 to 10V	

Tube							
	-	Set-point	Flange	Comms	Connector	Output	Other
ZD3G	0	A	2 = NW25	A	A	A	0
			3 = NW40				
			4 = DN40CF				
			5 = EX NW25				

Electronic	-	Set-point	Flange	Comms	Connector	Output	Other
	-	Set-point	Flange	Comms	Connector	Output	Other
ZD3G	0	0 = 0 Set point <sup>[2]</sup>	A	0 = RS485 <sup>[1]</sup>	1 = RJ45 <sup>[3]</sup>	0 = Edwards standard 2.00 to 10.00 V	0
		1 = 1 Set point		1 = 0-10V output	2 = 9 Pin D-Sub	2 = 1.4 to 8.60 V	
				5 = RS232 <sup>[1]</sup>		4 = 1.50 to 6.9375 V	

<sup>[1]</sup> only available with 9 pin D-Sub

<sup>[2]</sup> select for backwards compatible transistor output

<sup>[3]</sup> only with analogue 0-10V

## FREQUENTLY USED PART NUMBERS

Product description	Order no
WRG200 - NW25	D3G0021100
WRG200 - NW25 - RS485 - 9 Pin D-Sub	D3G0021200
WRG200 - DN40CF	D3G0041100



## По вопросам продаж и поддержки обращайтесь:

Алматы (727)345-47-04  
Ангарск (3955)60-70-56  
Архангельск (8182)63-90-72  
Астрахань (8512)99-46-04  
Барнаул (3852)73-04-60  
Белгород (4722)40-23-64  
Благовещенск (4162)22-76-07  
Брянск (4832)59-03-52  
Владивосток (423)249-28-31  
Владикавказ (8672)28-90-48  
Владимир (4922)49-43-18  
Волгоград (844)278-03-48  
Вологда (8172)26-41-59  
Воронеж (473)204-51-73  
Екатеринбург (343)384-55-89

Иваново (4932)77-34-06  
Ижевск (3412)26-03-58  
Иркутск (395)279-98-46  
Казань (843)206-01-48  
Калининград (4012)72-03-81  
Калуга (4842)92-23-67  
Кемерово (3842)65-04-62  
Киров (8332)68-02-04  
Коломна (4966)23-41-49  
Кострома (4942)77-07-48  
Краснодар (861)203-40-90  
Красноярск (391)204-63-61  
Курск (4712)77-13-04  
Курган (3522)50-90-47  
Липецк (4742)52-20-81

Магнитогорск (3519)55-03-13  
Москва (495)268-04-70  
Мурманск (8152)59-64-93  
Набережные Челны (8552)20-53-41  
Нижегород (831)429-08-12  
Новокузнецк (3843)20-46-81  
Ноябрьск (3496)41-32-12  
Новосибирск (383)227-86-73  
Омск (3812)21-46-40  
Орел (4862)44-53-42  
Оренбург (3532)37-68-04  
Пенза (8412)22-31-16  
Петрозаводск (8142)55-98-37  
Псков (8112)59-10-37  
Пермь (342)205-81-47

Ростов-на-Дону (863)308-18-15  
Рязань (4912)46-61-64  
Самара (846)206-03-16  
Санкт-Петербург (812)309-46-40  
Саратов (845)249-38-78  
Севастополь (8692)22-31-93  
Саранск (8342)22-96-24  
Симферополь (3652)67-13-56  
Смоленск (4812)29-41-54  
Сочи (862)225-72-31  
Ставрополь (8652)20-65-13  
Сургут (3462)77-98-35  
Сыктывкар (8212)25-95-17  
Тамбов (4752)50-40-97  
Тверь (4822)63-31-35

Тольятти (8482)63-91-07  
Томск (3822)98-41-53  
Тула (4872)33-79-87  
Тюмень (3452)66-21-18  
Ульяновск (8422)24-23-59  
Улан-Удэ (3012)59-97-51  
Уфа (347)229-48-12  
Хабаровск (4212)92-98-04  
Чебоксары (8352)28-53-07  
Челябинск (351)202-03-61  
Череповец (8202)49-02-64  
Чита (3022)38-34-83  
Якутск (4112)23-90-97  
Ярославль (4852)69-52-93

**Россия** +7(495)268-04-70

**Казахстан** +7(727)345-47-04

**Беларусь** +(375)257-127-884

**Узбекистан** +998(71)205-18-59

**Киргизия** +996(312)96-26-47

эл.почта: [ewc@nt-rt.ru](mailto:ewc@nt-rt.ru) || сайт: <https://edwards.nt-rt.ru/>