

Жидкостно-кольцевые вакуумные насосы двухступенчатые EHR, SHR

Технические характеристики

По вопросам продаж и поддержки обращайтесь:

Алматы (727)345-47-04
Ангарск (3955)60-70-56
Архангельск (8182)63-90-72
Астрахань (8512)99-46-04
Барнаул (3852)73-04-60
Белгород (4722)40-23-64
Благовещенск (4162)22-76-07
Брянск (4832)59-03-52
Владивосток (423)249-28-31
Владикавказ (8672)28-90-48
Владимир (4922)49-43-18
Волгоград (844)278-03-48
Вологда (8172)26-41-59
Воронеж (473)204-51-73
Екатеринбург (343)384-55-89

Иваново (4932)77-34-06
Ижевск (3412)26-03-58
Иркутск (395)279-98-46
Казань (843)206-01-48
Калининград (4012)72-03-81
Калуга (4842)92-23-67
Кемерово (3842)65-04-62
Киров (8332)68-02-04
Коломна (4966)23-41-49
Кострома (4942)77-07-48
Краснодар (861)203-40-90
Красноярск (391)204-63-61
Курск (4712)77-13-04
Курган (3522)50-90-47
Липецк (4742)52-20-81

Магнитогорск (3519)55-03-13
Москва (495)268-04-70
Мурманск (8152)59-64-93
Набережные Челны (8552)20-53-41
Нижегород (831)429-08-12
Новокузнецк (3843)20-46-81
Ноябрьск (3496)41-32-12
Новосибирск (383)227-86-73
Омск (3812)21-46-40
Орел (4862)44-53-42
Оренбург (3532)37-68-04
Пенза (8412)22-31-16
Петрозаводск (8142)55-98-37
Псков (8112)59-10-37
Пермь (342)205-81-47

Ростов-на-Дону (863)308-18-15
Рязань (4912)46-61-64
Самара (846)206-03-16
Санкт-Петербург (812)309-46-40
Саратов (845)249-38-78
Севастополь (8692)22-31-93
Саранск (8342)22-96-24
Симферополь (3652)67-13-56
Смоленск (4812)29-41-54
Сочи (862)225-72-31
Ставрополь (8652)20-65-13
Сургут (3462)77-98-35
Сыктывкар (8212)25-95-17
Тамбов (4752)50-40-97
Тверь (4822)63-31-35

Тольятти (8482)63-91-07
Томск (3822)98-41-53
Тула (4872)33-79-87
Тюмень (3452)66-21-18
Ульяновск (8422)24-23-59
Улан-Удэ (3012)59-97-51
Уфа (347)229-48-12
Хабаровск (4212)92-98-04
Чебоксары (8352)28-53-07
Челябинск (351)202-03-61
Череповец (8202)49-02-64
Чита (3022)38-34-83
Якутск (4112)23-90-97
Ярославль (4852)69-52-93

Россия +7(495)268-04-70

Казахстан +7(727)345-47-04

Беларусь +(375)257-127-884

Узбекистан +998(71)205-18-59

Киргизия +996(312)96-26-47

эл.почта: ewc@nt-rt.ru || сайт: <https://edwards.nt-rt.ru/>

EHR2190 - Liquid Ring Vacuum Pump CI

Part Number: **A80000000**

Variant

Explore the range of variants given below to compare the product

SHORT DESCRIPTION	PART NUMBER
<input checked="" type="radio"/> EHR2190 - CI	A80000000
<input type="radio"/> EHR2190 - SS	A80001000
<input type="radio"/> EHR2190 - SS fitted	A80005000

EHR2290 - Liquid Ring Vacuum Pump CI

Part Number: **A80010000**

Variant

Explore the range of variants given below to compare the product

SHORT DESCRIPTION	PART NUMBER
<input checked="" type="radio"/> EHR2290 - CI	A80010000
<input type="radio"/> EHR2290 - SS	A80011000

EHR2390 - Liquid Ring Vacuum Pump SS

Part Number: **A80021000**

Variant

Explore the range of variants given below to compare the product

SHORT DESCRIPTION		PART NUMBER
<input type="radio"/>	EHR2390 - CI	A80020000
<input checked="" type="radio"/>	EHR2390 - SS	A80021000
<input type="radio"/>	EHR2390 - SS fitted	A80025000

SHR21200 - Liquid Ring Vacuum Pump CI

Part Number: **A80130000**

Variant

Explore the range of variants given below to compare the product

SHORT DESCRIPTION		PART NUMBER
<input checked="" type="radio"/>	SHR21200 - CI	A80130000
<input type="radio"/>	SHR21200 - SS fitted	A80135000

SHR21850 - Liquid Ring Vacuum Pump CI

Part Number: **A80150000**

Variant

Explore the range of variants given below to compare the product

SHORT DESCRIPTION	PART NUMBER
<input checked="" type="radio"/> SHR21850 - CI	A80150000
<input type="radio"/> SHR21850 - SS	A80151000
<input type="radio"/> SHR21850 - SS fitted	A80155000
<input type="radio"/> SHR21850 - CI2Ni DIN FLANGED LRP	NR7110000

SHR22500 - Liquid Ring Vacuum Pump CI

Part Number: **A80170000**

Variant

Explore the range of variants given below to compare the product

SHORT DESCRIPTION	PART NUMBER
<input checked="" type="radio"/> SHR22500 - CI	A80170000
<input type="radio"/> SHR22500 - SS	A80171000
<input type="radio"/> SHR22500 - SS fitted	A80175000
<input type="radio"/> SHR22500 - CI+2%Ni DIN FLANGE LRP	NR7112000

SHR2750 - Liquid Ring Vacuum Pump CI

Part Number: **A80090000**

Variant

Explore the range of variants given below to compare the product

SHORT DESCRIPTION	PART NUMBER
<input checked="" type="radio"/> SHR2750 - CI	A80090000
<input type="radio"/> SHR2750 - SS	A80091000
<input type="radio"/> SHR2750 - SS fitted	A80095000

SHR2400 - Liquid Ring Vacuum Pump CI

Part Number: **A80060000**

Variant

Explore the range of variants given below to compare the product

SHORT DESCRIPTION	PART NUMBER
<input checked="" type="radio"/> SHR2400 - CI	A80060000
<input type="radio"/> SHR2400 - SS	A80061000
<input type="radio"/> SHR2400 - SS fitted	A80065000

SHR2950 - Liquid Ring Vacuum Pump SS

Part Number: **A80101000**

Variant

Explore the range of variants given below to compare the product

SHORT DESCRIPTION		PART NUMBER
<input type="radio"/>	SHR2950 - CI	A80100000
<input checked="" type="radio"/>	SHR2950 - SS	A80101000
<input type="radio"/>	SHR2950 - SS fitted	A80105000

SHR21850 - Liquid Ring Vacuum Pump CI

Part Number: **NR7110000**

Variant

Explore the range of variants given below to compare the product

SHORT DESCRIPTION		PART NUMBER
<input type="radio"/>	SHR21850 - CI	A80150000
<input type="radio"/>	SHR21850 - SS	A80151000
<input type="radio"/>	SHR21850 - SS fitted	A80155000
<input checked="" type="radio"/>	SHR21850 - CI2Ni DIN FLANGED LRP	NR7110000

EHR2190 LIQUID RING VACUUM PUMP

Within Edwards' full range of liquid ring vacuum pumps, the EHR/SHR series offers a two-stage construction for peak performance at low suction pressures.

Liquid ring pumps are ideal for pumping either dry or wet gases, with a high tolerance to liquid carry over. Pumps are available in a variety of materials which can be selected to handle the pumped process media.

All Edwards liquid ring pumps are available as part of ATEX category 1 or category 2 pump systems. The EHR2190 is ideal for vacuum distillation and evaporator applications in the chemical, pharmaceutical and biofuels industry, and is also suited to condenser air extraction in the power industry.



Pumps can be supplied as bareshaft or as part of a package complete with drive motor, discharge separator, heat exchanger and other accessories for recirculation of the seal liquid.

FEATURES AND BENEFITS



Two stage design - peak efficiency at high vacuum



Operates across entire vacuum range



Mechanical shaft seals



Externally mounted bearings



Choice of construction materials



Rugged, robust construction



Minimum number of body joints



ATEX certified

PRODUCT DATA SHEET

TECHNICAL DATA

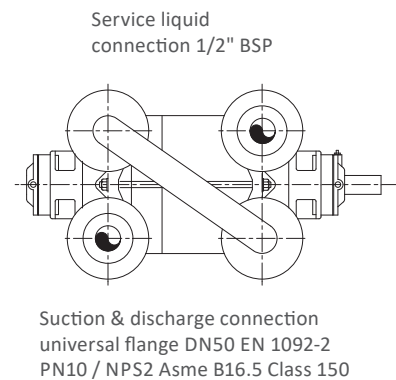
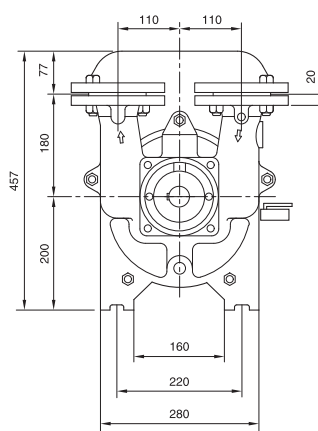
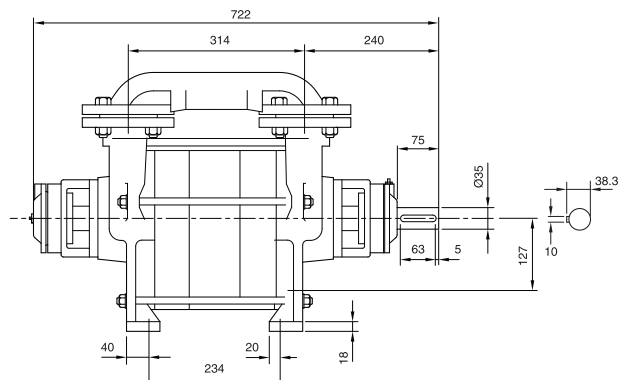
Performance details	50 Hz	60 Hz
Nominal capacity	190 m ³ /h	215 m ³ /h
Suction pressure	30 mbara	30 mbara
Nominal speed	1470 rpm	1740 rpm
Nominal motor power	5.5 kW	7.5 kW
Weight	90 kg	

MATERIALS OF CONSTRUCTION

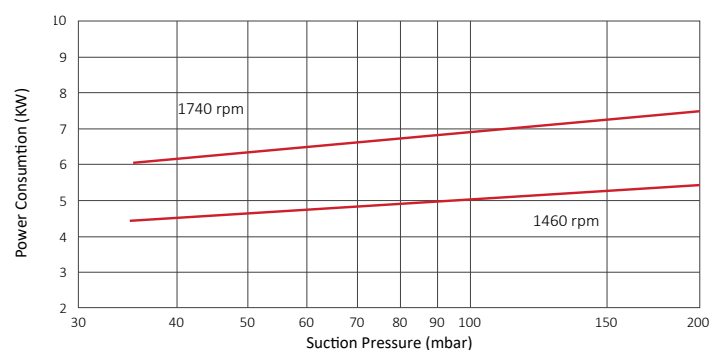
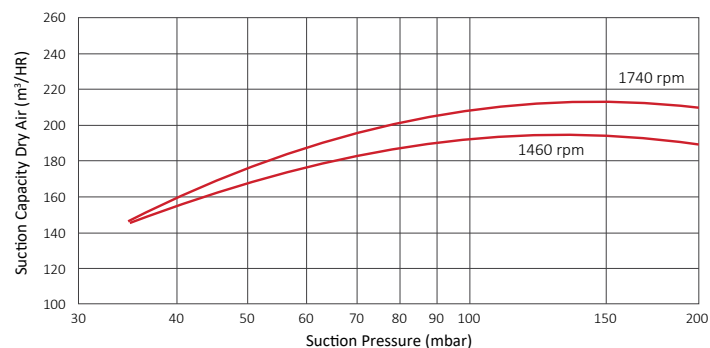
	Cast Iron	Stainless Steel	Stainless Steel Fitted
Casing	Cast Iron	CF8M	Cast Iron
Body	Cast Iron	CF8M	Cast Iron
Impeller	SG Iron	CF8M	CF8M
Shaft	420S37	316S11	420S37
Seals	Mechanical	Mechanical	Mechanical

Edwards reserves the right to use equivalent materials.

DIMENSIONS



SPEED CURVES



EHR2390 LIQUID RING VACUUM PUMP

Within Edwards' full range of liquid ring vacuum pumps, the EHR/SHR series offers a two-stage construction for peak performance at low suction pressures.

Liquid ring pumps are ideal for pumping either dry or wet gases, with a high tolerance to liquid carry over. Pumps are available in a variety of materials which can be selected to handle the pumped process media.

All Edwards liquid ring pumps are available as part of ATEX category 1 or category 2 pump systems. The EHR2390 is ideal for vacuum distillation and evaporator applications in the chemical, pharmaceutical and biofuels industry, and is also suited to condenser air extraction in the power industry.



Pumps can be supplied as bareshaft or as part of a package complete with drive motor, discharge separator, heat exchanger and other accessories for recirculation of the seal liquid.

FEATURES AND BENEFITS



Two stage design - peak efficiency at high vacuum



Operates across entire vacuum range



Mechanical shaft seals



Externally mounted bearings



Choice of construction materials



Rugged, robust construction



Minimum number of body joints



ATEX certified

PRODUCT DATA SHEET

TECHNICAL DATA

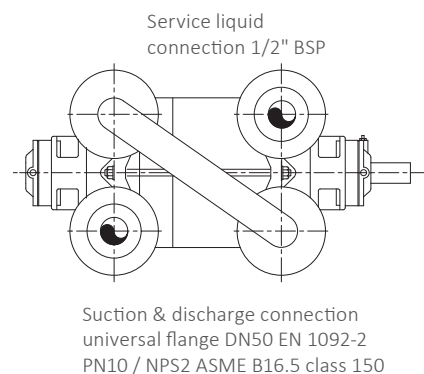
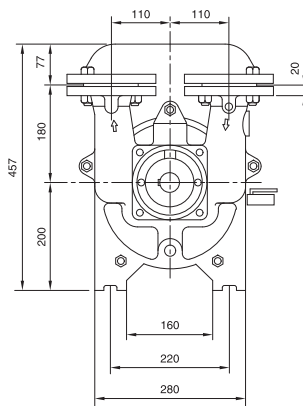
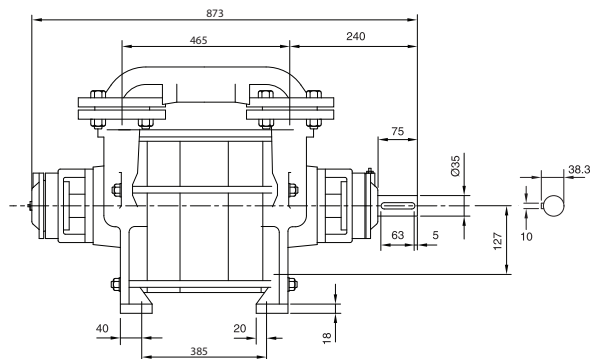
Performance details	50 Hz	60 Hz
Nominal capacity	390 m ³ /h	440 m ³ /h
Suction pressure	30 mbara	30 mbara
Nominal speed	1470 rpm	1740 rpm
Nom motor power	11 kW	15 kW
Weight	160 kg	

MATERIALS OF CONSTRUCTION

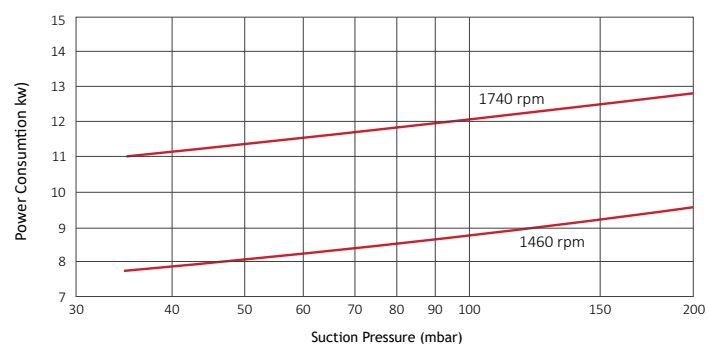
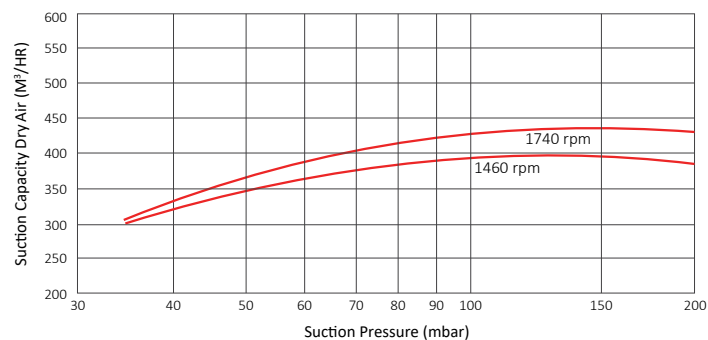
	Cast Iron	Stainless Steel	Stainless Steel Fitted
Casing	Cast Iron	CF8M	Cast Iron
Body	Cast Iron	CF8M	Cast Iron
Impeller	SG Iron	CF8M	CF8M
Shaft	420S37	316S11	420S37
Seals	Mechanical	Mechanical	Mechanical

Edwards reserves the right to use equivalent materials.

DIMENSIONS



SPEED CURVES





EHR2290 - Liquid Ring Vacuum Pump CI

Part Number: **A80010000**

Specifications

Connection Vacuum Inlet Flange	DN 50 ASA/ANSI 2"
Connection vacuum outlet flange	DN 50 ASA/ANSI 2"
Cooling Method	Water Cooling
Pressure Ultimate	3000.00 <u>Pa</u> ▼
Power Total Rated	7500.00 <u>W</u> ▼

Variant

Explore the range of variants given below to compare the product

	SHORT DESCRIPTION	PART NUMBER
<input checked="" type="radio"/>	EHR2290 - CI	A80010000
<input type="radio"/>	EHR2290 - SS	A80011000

PRODUCT DETAILS

Liquid Ring Pumps Double-Stage Plate

Liquid ring vacuum pumps are positive displacement pumps that use a ring of liquid to create a seal between the vanes or impeller and the pump housing, creating a vacuum and pumping gas or vapor out of a chamber. They are rugged, reliable and widely used in applications ranging from chemical processing, paper and pulp industry, power generation, and wastewater treatment. They excel at handling condensable vapors and liquid slugs, making them ideal for wet applications with high levels of contamination.

Discover our cutting-edge Liquid Ring Vacuum Pumps, EHR Series and SHR Series, meticulously designed by Edwards.

Tailored for the most demanding applications in process industries, our liquid ring pump range comprises both one and two-stage machines, ensuring optimum efficiency across a broad vacuum range. With capacities reaching up to 40,000 m³/h in one stage and 7,500 m³/h in two-stage models, these pumps deliver powerful performance.

HR

For rough vacuum applications in the chemical and allied process industries.

The HR series, which includes the EHR and SHR models, brings you continuous reliable operation at low pressures. The range is designed to be tolerant of particulates and requires minimal maintenance, making it ideal for use in your power generation, chemical and process applications.

EHR2290 - CI

For rough vacuum applications in the chemical and allied process industries

The LR Series, including LR1A and LR1B single-stage models, are tolerant of particulates and operate with minimal maintenance and noise, making them ideal for your continuous operations in the power, chemical and process industries.

Features and Benefits

Efficiency and Power: Experience unparalleled efficiency with our one and two-stage liquid ring pumps, perfect for processes operating at various vacuum levels.

Innovation Redefined: Explore our ELRi range, a revolutionary line of intelligent and connected liquid ring vacuum pumps, integrating years of expertise and innovative technical advancements.

Customized Solutions: Benefit from our extensive experience in designing, engineering, and assembling bespoke liquid ring pump and hybrid vacuum systems. We provide tailored solutions for diverse process applications, meeting unique customer requirements.

Count on Edwards for top-quality Liquid Ring Pumps, designed to excel in the most challenging industrial environments. Enhance your processes with our reliable, efficient, and customized vacuum solutions.

SPECIFICATIONS

General Product Information

Connection Vacuum Inlet Flange	DN 50
	ASA/ANSI 2"
Weight	140.00 kg ▼
Connection vacuum outlet flange	DN 50
	ASA/ANSI 2"
Dimension Length	0.820 m ▼
Supply Frequency	50 Hz
	60 Hz
Dimension Height	0.460 m ▼
Dimension Width	0.390 m ▼

Noise Level	80.00 db(A)
Cooling Method	Water Cooling
Connection Cooling	1/2" BSPP (G) Female
connectionVacuumFlangeCombined	DN 50 / DN 50
dimensionComments	The dimensions length, width and height try to describe the outer shape of this particular product in its typical orientation when standing on the ground. We always recommend checking the detailed dimensions given in 2D drawings in the instruction manual or the 3D shapes given in 3D models.

Performance Data

Power Total Rated	7500.00 <u>W</u> ▼
Power Total Rated @60Hz	7500.00 <u>W</u> ▼
Power Total Rated @50Hz	7500.00 <u>W</u> ▼
Pressure Ultimate	3000.00 <u>Pa</u> ▼
Capacity Air / Nitrogen @50Hz Nominal	0.081 <u>m³/s</u> ▼
Capacity Air / Nitrogen @60Hz Nominal	0.092 <u>m³/s</u> ▼

Operation Conditions - Limitations

Altitude Max.	1000.00 <u>m</u> ▼
Temperature Inlet Gas Max.	353.15 <u>K</u> ▼
pressureOutletMaxContinous	1.200 × 10 ⁵ <u>Pa</u> ▼

Environmental Conditions

Temperature Ambient Operation Max	323.15 <u>K</u> ▼
---	-------------------

Temperature Ambient Operation Min.	253.15 <u>K</u> ▼
--	-------------------

Temperature Ambient Storage Min.	243.15 <u>K</u> ▼
--	-------------------

Temperature Ambient Storage Max.	323.15 <u>K</u> ▼
--	-------------------

Classification

Product Pressure Range	Rough Vacuum: 1000 mbar - 1 mbar
---------------------------	----------------------------------

High / Medium / Rough Vacuum Classification	Rough Vacuum Pump
---	-------------------

Dry or Wet Pump	Wet
-----------------	-----

Vacuum Pump Technology	Liquid Ring Pump
---------------------------	------------------

Lubricants

Grease Type	DIN51825 K2K-30
-------------	-----------------

Variants

variantLrpMaterialOfConstruction	CI
----------------------------------	----

Material of Construction	CI - Cast Iron
---------------------------------	----------------

Material Of Construction	Grey cast iron, Carbon steel, Spheroidal graphite (ductile) cast iron, Stainless steel 420, Silicon carbide, Stainless steel 316, FPM, Compressed fibre, Polyester urethane, Ball, PTFE
-----------------------------	---



EHR2290 - Liquid Ring Vacuum Pump SS

Part Number: **A80011000**

Specifications

Connection Vacuum Inlet Flange	DN 50 ASA/ANSI 2"
Connection vacuum outlet flange	DN 50 ASA/ANSI 2"
Cooling Method	Water Cooling
Pressure Ultimate	3000.00 <u>Pa</u> ▼
Power Total Rated	7500.00 <u>W</u> ▼

Variant

Explore the range of variants given below to compare the product

	SHORT DESCRIPTION	PART NUMBER
<input type="radio"/>	EHR2290 - CI	A80010000
<input checked="" type="radio"/>	EHR2290 - SS	A80011000

PRODUCT DETAILS



Liquid Ring Pumps Double-Stage Plate

Liquid ring vacuum pumps are positive displacement pumps that use a ring of liquid to create a seal between the vanes or impeller and the pump housing, creating a vacuum and pumping gas or vapor out of a chamber. They are rugged, reliable and widely used in applications ranging from chemical processing, paper and pulp industry, power generation, and wastewater treatment. They excel at handling condensable vapors and liquid slugs, making them ideal for wet applications with high levels of contamination.

Discover our cutting-edge Liquid Ring Vacuum Pumps, EHR Series and SHR Series, meticulously designed by Edwards.

Tailored for the most demanding applications in process industries, our liquid ring pump range comprises both one and two-stage machines, ensuring optimum efficiency across a broad vacuum range. With capacities reaching up to 40,000 m³/h in one stage and 7,500 m³/h in two-stage models, these pumps deliver powerful performance.

HR

For rough vacuum applications in the chemical and allied process industries.

The HR series, which includes the EHR and SHR models, brings you continuous reliable operation at low pressures. The range is designed to be tolerant of particulates and requires minimal maintenance, making it ideal for use in your power generation, chemical and process applications.

EHR2290 - SS

For rough vacuum applications in the chemical and allied process industries

The LR Series, including LR1A and LR1B single-stage models, are tolerant of particulates and operate with minimal maintenance and noise, making them ideal for your continuous operations in the power, chemical and process industries.

Features and Benefits

Efficiency and Power: Experience unparalleled efficiency with our one and two-stage liquid ring pumps, perfect for processes operating at various vacuum levels.

Innovation Redefined: Explore our ELRi range, a revolutionary line of intelligent and connected liquid ring vacuum pumps, integrating years of expertise and innovative technical advancements.

Customized Solutions: Benefit from our extensive experience in designing, engineering, and assembling bespoke liquid ring pump and hybrid vacuum systems. We provide tailored solutions for diverse process applications, meeting unique customer requirements.

Count on Edwards for top-quality Liquid Ring Pumps, designed to excel in the most challenging industrial environments. Enhance your processes with our reliable, efficient, and customized vacuum solutions.

SPECIFICATIONS ➤

General Product Information

Connection Vacuum Inlet Flange	DN 50
	ASA/ANSI 2"
Weight	140.00 kg ▼
Connection vacuum outlet flange	DN 50
	ASA/ANSI 2"
Dimension Length	0.820 m ▼
Supply Frequency	50 Hz
	60 Hz
Dimension Height	0.460 m ▼
Dimension Width	0.390 m ▼

Noise Level	80.00 db(A)
Cooling Method	Water Cooling
Connection Cooling	1/2" BSPP (G) Female
connectionVacuumFlangeCombined	DN 50 / DN 50
dimensionComments	The dimensions length, width and height try to describe the outer shape of this particular product in its typical orientation when standing on the ground. We always recommend checking the detailed dimensions given in 2D drawings in the instruction manual or the 3D shapes given in 3D models.

Performance Data

Power Total Rated	7500.00 <u>W</u> ▼
Power Total Rated @60Hz	7500.00 <u>W</u> ▼
Power Total Rated @50Hz	7500.00 <u>W</u> ▼
Pressure Ultimate	3000.00 <u>Pa</u> ▼
Capacity Air / Nitrogen @50Hz Nominal	0.081 <u>m³/s</u> ▼
Capacity Air / Nitrogen @60Hz Nominal	0.092 <u>m³/s</u> ▼

Classification

Product Pressure Range	Rough Vacuum: 1000 mbar - 1 mbar
High / Medium / Rough Vacuum Classification	Rough Vacuum Pump

Dry or Wet Pump	Wet
Vacuum Pump Technology	Liquid Ring Pump
Material of Construction	
Material Of Construction	Stainless steel 316, Silicon, Silicon carbide, FPM, Compressed fibre, Ball, PTFE
Variants	
variantLrpMaterialOfConstruction	SS
	SS - Stainless Steel
Operation Conditions - Limitations	
Altitude Max.	1000.00 <u>m</u> ▼
Temperature Inlet Gas Max.	353.15 <u>K</u> ▼
pressureOutletMaxContinous	1.200 × 10 ⁵ <u>Pa</u> ▼
Environmental Conditions	
Temperature Ambient Operation Max	323.15 <u>K</u> ▼
Temperature Ambient Operation Min.	253.15 <u>K</u> ▼
Temperature Ambient Storage Min.	243.15 <u>K</u> ▼
Temperature Ambient Storage Max.	323.15 <u>K</u> ▼
Lubricants	
Grease Type	DIN51825 K2K-30

SHR21200 LIQUID RING VACUUM PUMP

Within Edwards' full range of liquid ring vacuum pumps, the EHR/SHR series offers a two-stage construction for peak performance at low suction pressures.

Liquid ring pumps are ideal for pumping either dry or wet gases, with a high tolerance to liquid carry over. Pumps are available in a variety of materials which can be selected to handle the pumped process media.

All Edwards liquid ring pumps are available as part of ATEX category 1 or category 2 pump systems. The SHR21200 is ideal for vacuum distillation and evaporator applications in the chemical, pharmaceutical and biofuels industry, and is also suited to condenser air extraction in the power industry.



Pumps can be supplied as bareshaft or as part of a package complete with drive motor, discharge separator, heat exchanger and other accessories for recirculation of the seal liquid.

FEATURES AND BENEFITS



Two stage design - peak efficiency at high vacuum



Operates across entire vacuum range



Mechanical shaft seals



ATEX certified



Choice of construction materials



Rugged, robust construction



Externally mounted bearings

PRODUCT DATA SHEET

TECHNICAL DATA

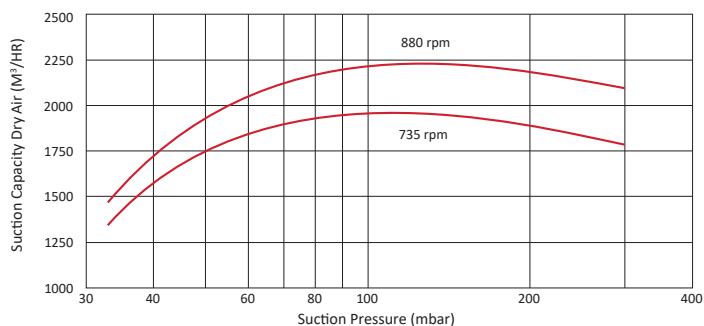
Performance details	50 Hz	60 Hz
Nominal capacity	1960 m ³ /h	2240 m ³ /h
Suction pressure	30 mbara	30 mbara
Nominal speed	735 rpm	880 rpm
Nominal motor power	75 kW	90 kW
Weight	1180 kg	

MATERIALS OF CONSTRUCTION

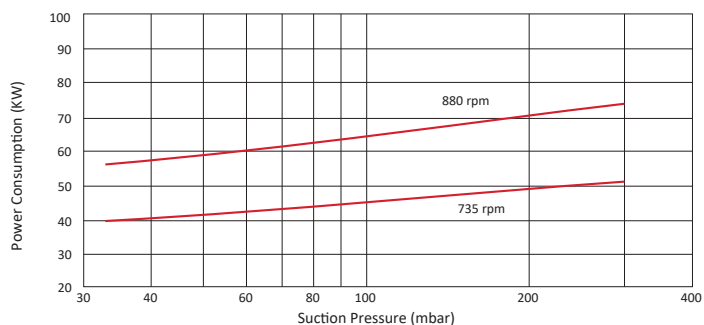
	Cast Iron	Stainless Steel	Stainless Steel Fitted
Casing	Cast Iron	CF8M	Cast Iron
Body	Cast Iron	CF8M	Cast Iron
Impeller	SG Iron	CF8M	CF8M
Shaft	708M40	316S11	708M40
Seals	Mechanical	Mechanical	Mechanical

Edwards reserves the right to use equivalent materials.

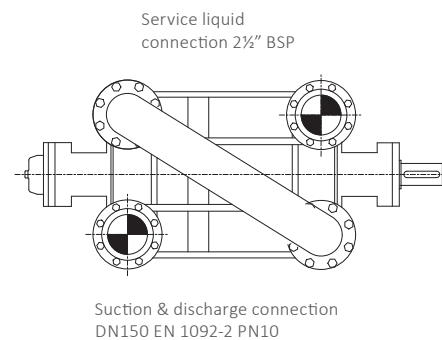
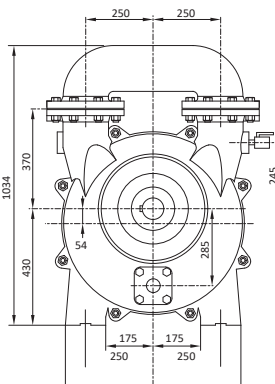
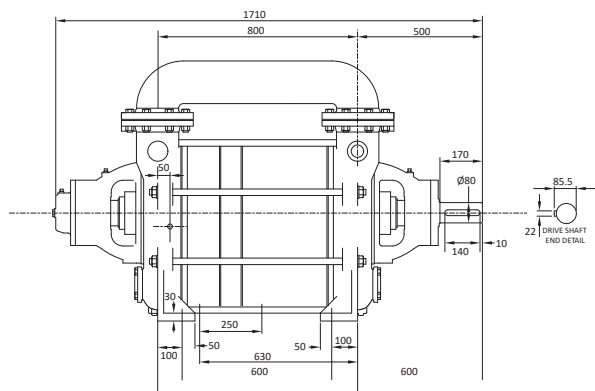
SPEED CURVES



POWER CURVES



Dimensions



SHR21850 LIQUID RING VACUUM PUMP

Within Edwards' full range of liquid ring vacuum pumps, the EHR/SHR series offers a two-stage construction for peak performance at low suction pressures.

Liquid ring pumps are ideal for pumping either dry or wet gases, with a high tolerance to liquid carry over. Pumps are available in a variety of materials which can be selected to handle the pumped process media.

All Edwards liquid ring pumps are available as part of ATEX category 1 or category 2 pump systems. The SHR21850 is ideal for vacuum distillation and evaporator applications in the chemical, pharmaceutical and biofuels industry, and is also suited to condenser air extraction in the power industry.



Pumps can be supplied as bareshaft or as part of a package complete with drive motor, discharge separator, heat exchanger and other accessories for recirculation of the seal liquid.

FEATURES AND BENEFITS



Two stage design - peak efficiency at high vacuum



Operates across entire vacuum range



Mechanical shaft seals



ATEX certified



Choice of construction materials



Rugged, robust construction



Externally mounted bearings

PRODUCT DATA SHEET

TECHNICAL DATA

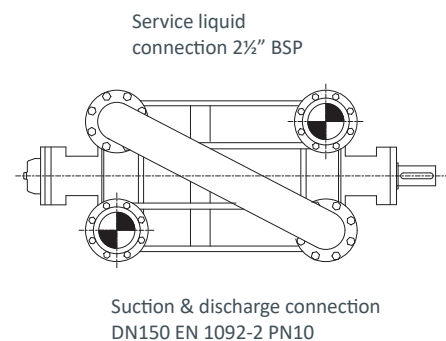
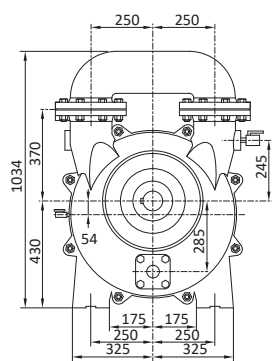
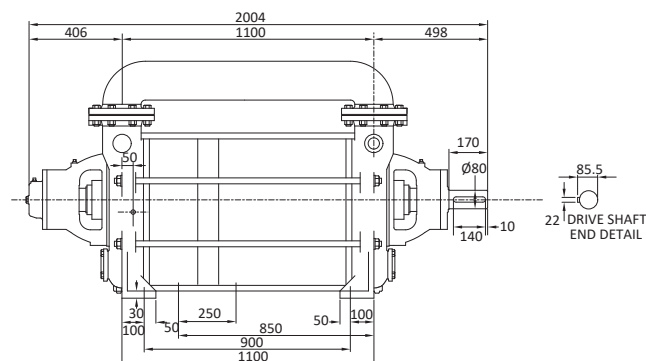
Performance details	50 Hz	60 Hz
Nominal capacity	3280 m ³ /h	3800 m ³ /h
Suction pressure	30 mbara	30 mbara
Nominal speed	735 rpm	880 rpm
Nominal motor power	110 kW	132 kW
Weight	1680 kg	

MATERIALS OF CONSTRUCTION

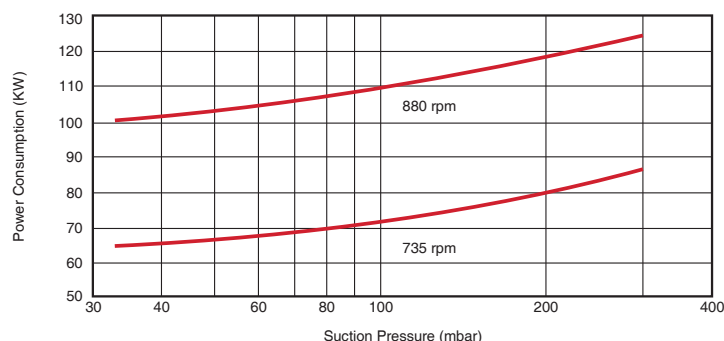
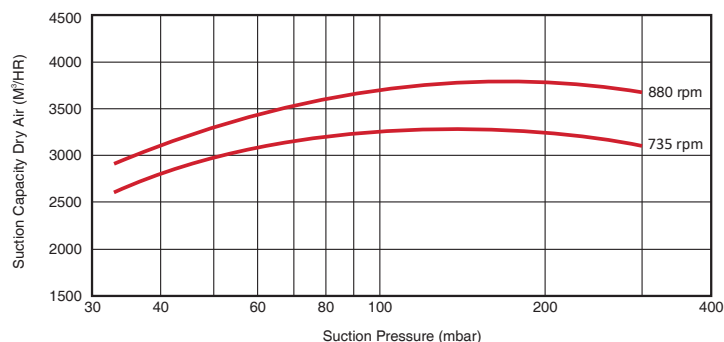
	Cast Iron	Stainless Steel	Stainless Steel Fitted
Casing	Cast Iron	CF8M	Cast Iron
Body	Cast Iron	CF8M	Cast Iron
Impeller	SG Iron	CF8M	CF8M
Shaft	708M40	316S11	708M40
Seals	Mechanical	Mechanical	Mechanical

Edwards reserves the right to use equivalent materials.

DIMENSIONS



SPEED CURVES





SHR2400 - Liquid Ring Vacuum Pump CI

Part Number: **A80060000**

Specifications

Connection Vacuum Inlet Flange	DN 65 ASA/ANSI 2 1/2"
Connection vacuum outlet flange	DN 65 ASA/ANSI 2 1/2"
Cooling Method	Water Cooling
Pressure Ultimate	3000.00 <u>Pa</u> ▼
Power Total Rated	22000.00 <u>W</u> ▼

Variant

Explore the range of variants given below to compare the product

	SHORT DESCRIPTION	PART NUMBER
<input checked="" type="radio"/>	SHR2400 - CI	A80060000
<input type="radio"/>	SHR2400 - SS	A80061000
<input type="radio"/>	SHR2400 - SS fitted	A80065000

Liquid Ring Pumps Double-Stage Plate

Liquid ring vacuum pumps are positive displacement pumps that use a ring of liquid to create a seal between the vanes or impeller and the pump housing, creating a vacuum and pumping gas or vapor out of a chamber. They are rugged, reliable and widely used in applications ranging from chemical processing, paper and pulp industry, power generation, and wastewater treatment. They excel at handling condensable vapors and liquid slugs, making them ideal for wet applications with high levels of contamination.

Discover our cutting-edge Liquid Ring Vacuum Pumps, EHR Series and SHR Series, meticulously designed by Edwards.

Tailored for the most demanding applications in process industries, our liquid ring pump range comprises both one and two-stage machines, ensuring optimum efficiency across a broad vacuum range. With capacities reaching up to 40,000 m³/h in one stage and 7,500 m³/h in two-stage models, these pumps deliver powerful performance.

HR

For rough vacuum applications in the chemical and allied process industries.

The HR series, which includes the EHR and SHR models, brings you continuous reliable operation at low pressures. The range is designed to be tolerant of particulates and requires minimal maintenance, making it ideal for use in your power generation, chemical and process applications.

SHR2400 - CI

For rough vacuum applications in the chemical and allied process industries

The LR Series, including LR1A and LR1B single-stage models, are tolerant of particulates and operate with minimal maintenance and noise, making them ideal for your continuous operations in the power, chemical and process industries.

Features and Benefits

Efficiency and Power: Experience unparalleled efficiency with our one and two-stage liquid ring pumps, perfect for processes operating at various vacuum levels.

Innovation Redefined: Explore our ELRi range, a revolutionary line of intelligent and connected liquid ring vacuum pumps, integrating years of expertise and innovative technical advancements.

Customized Solutions: Benefit from our extensive experience in designing, engineering, and assembling bespoke liquid ring pump and hybrid vacuum systems. We provide tailored solutions for diverse process applications, meeting unique customer requirements.

Count on Edwards for top-quality Liquid Ring Pumps, designed to excel in the most challenging industrial environments. Enhance your processes with our reliable, efficient, and customized vacuum solutions.

SPECIFICATIONS ➤

General Product Information

Connection Vacuum Inlet Flange	DN 65
	ASA/ANSI 2 1/2"
Weight	222.00 <u>kg</u> ▼
Connection vacuum outlet flange	DN 65
	ASA/ANSI 2 1/2"
Dimension Length	0.990 <u>m</u> ▼
Supply Frequency	50 Hz
	60 Hz
Dimension Height	0.570 <u>m</u> ▼
Dimension Width	0.430 <u>m</u> ▼

Noise Level	80.00 db(A)
Cooling Method	Water Cooling
Connection Cooling	3/4" BSPP (G) Female
motorEfficiencyClass	IE4
connectionVacuumFlangeCombined	DN 65 / DN 65
dimensionComments	<p>The dimensions length, width and height try to describe the outer shape of this particular product in its typical orientation when standing on the ground.</p> <p>We always recommend checking the detailed dimensions given in 2D drawings in the instruction manual or the 3D shapes given in 3D models.</p>

Performance Data

Power Total Rated	22000.00 <u>W</u> ▼
Power Total Rated @60Hz	30000.00 <u>W</u> ▼
Power Total Rated @50Hz	22000.00 <u>W</u> ▼
Rotational Speed @50Hz Nominal	24.50 <u>Hz</u> ▼
Pressure Ultimate	3000.00 <u>Pa</u> ▼
Rotational Speed @60Hz Nominal	29.00 <u>Hz</u> ▼
Capacity Air / Nitrogen @50Hz Nominal	0.169 <u>m³/s</u> ▼
Capacity Air / Nitrogen @60Hz Nominal	0.194 <u>m³/s</u> ▼

Operation Conditions - Limitations

Altitude Max.	1000.00 <u>m</u> ▼
Temperature Inlet Gas Max.	353.15 <u>K</u> ▼
pressureOutletMaxContinuous	1.200×10^5 <u>Pa</u> ▼

Environmental Conditions

Temperature Ambient Operation Max	323.15 <u>K</u> ▼
Temperature Ambient Operation Min.	253.15 <u>K</u> ▼
Temperature Ambient Storage Min.	243.15 <u>K</u> ▼
Temperature Ambient Storage Max.	323.15 <u>K</u> ▼

Classification

Product Pressure Range	Rough Vacuum: 1000 mbar - 1 mbar
High / Medium / Rough Vacuum Classification	Rough Vacuum Pump
Dry or Wet Pump	Wet
Vacuum Pump Technology	Liquid Ring Pump

Lubricants

Grease Type	DIN51825 K25-30
-------------	-----------------

Variants

variantLrpMaterialOfConstruction	CI
	CI - Cast Iron

Material of Construction

Material Of Construction	Grey cast iron, Carbon steel, Spheroidal graphite (ductile) cast iron, Stainless steel 420, Silicon carbide, Stainless steel 316, EPDM, Compressed fibre, Polyester urethane, Ball, PTFE
--------------------------	--



SHR2750 - Liquid Ring Vacuum Pump CI

Part Number: **A80090000**

Specifications

Connection Vacuum Inlet Flange	DN 100 ASA/ANSI 4"
Connection vacuum outlet flange	DN 100 ASA/ANSI 4"
Cooling Method	Water Cooling
Pressure Ultimate	3000.00 <u>Pa</u> ▼
Power Total Rated	45000.00 <u>W</u> ▼

Variant

Explore the range of variants given below to compare the product

	SHORT DESCRIPTION	PART NUMBER
<input checked="" type="radio"/>	SHR2750 - CI	A80090000
<input type="radio"/>	SHR2750 - SS	A80091000
<input type="radio"/>	SHR2750 - SS fitted	A80095000

Liquid Ring Pumps Double-Stage Plate

Liquid ring vacuum pumps are positive displacement pumps that use a ring of liquid to create a seal between the vanes or impeller and the pump housing, creating a vacuum and pumping gas or vapor out of a chamber. They are rugged, reliable and widely used in applications ranging from chemical processing, paper and pulp industry, power generation, and wastewater treatment. They excel at handling condensable vapors and liquid slugs, making them ideal for wet applications with high levels of contamination.

Discover our cutting-edge Liquid Ring Vacuum Pumps, EHR Series and SHR Series, meticulously designed by Edwards.

Tailored for the most demanding applications in process industries, our liquid ring pump range comprises both one and two-stage machines, ensuring optimum efficiency across a broad vacuum range. With capacities reaching up to 40,000 m³/h in one stage and 7,500 m³/h in two-stage models, these pumps deliver powerful performance.

HR

For rough vacuum applications in the chemical and allied process industries.

The HR series, which includes the EHR and SHR models, brings you continuous reliable operation at low pressures. The range is designed to be tolerant of particulates and requires minimal maintenance, making it ideal for use in your power generation, chemical and process applications.

SHR2750 - CI

For rough vacuum applications in the chemical and allied process industries

The LR Series, including LR1A and LR1B single-stage models, are tolerant of particulates and operate with minimal maintenance and noise, making them ideal for your continuous operations in the power, chemical and process industries.

Features and Benefits

Efficiency and Power: Experience unparalleled efficiency with our one and two-stage liquid ring pumps, perfect for processes operating at various vacuum levels.

Innovation Redefined: Explore our ELRi range, a revolutionary line of intelligent and connected liquid ring vacuum pumps, integrating years of expertise and innovative technical advancements.

Customized Solutions: Benefit from our extensive experience in designing, engineering, and assembling bespoke liquid ring pump and hybrid vacuum systems. We provide tailored solutions for diverse process applications, meeting unique customer requirements.

Count on Edwards for top-quality Liquid Ring Pumps, designed to excel in the most challenging industrial environments. Enhance your processes with our reliable, efficient, and customized vacuum solutions.

SPECIFICATIONS

➤

General Product Information

Connection Vacuum Inlet Flange	DN 100
	ASA/ANSI 4"
Weight	584.00 kg ▼
Connection vacuum outlet flange	DN 100
	ASA/ANSI 4"
Dimension Length	1.28 m ▼
Supply Frequency	50 Hz
	60 Hz
Dimension Height	0.770 m ▼
Dimension Width	0.600 m ▼

Noise Level	82.00 db(A)
Cooling Method	Water Cooling
Connection Cooling	2" BSPP (G) Female
motorEfficiencyClass	IE4
connectionVacuumFlangeCombined	DN 100 / DN 100
dimensionComments	<p>The dimensions length, width and height try to describe the outer shape of this particular product in its typical orientation when standing on the ground.</p> <p>We always recommend checking the detailed dimensions given in 2D drawings in the instruction manual or the 3D shapes given in 3D models.</p>

Performance Data

Power Total Rated	45000.00 <u>W</u> ▼
Power Total Rated @60Hz	55000.00 <u>W</u> ▼
Power Total Rated @50Hz	45000.00 <u>W</u> ▼
Rotational Speed @50Hz Nominal	16.33 <u>Hz</u> ▼
Pressure Ultimate	3000.00 <u>Pa</u> ▼
Rotational Speed @60Hz Nominal	19.58 <u>Hz</u> ▼
Capacity Air / Nitrogen @50Hz Nominal	0.342 <u>m³/s</u> ▼
Capacity Air / Nitrogen @60Hz Nominal	0.400 <u>m³/s</u> ▼

Operation Conditions - Limitations

Altitude Max.	1000.00 <u>m</u> ▼
Temperature Inlet Gas Max.	353.15 <u>K</u> ▼
pressureOutletMaxContinuous	1.200 × 10 ⁵ <u>Pa</u> ▼

Environmental Conditions

Temperature Ambient Operation Max	323.15 <u>K</u> ▼
Temperature Ambient Operation Min.	253.15 <u>K</u> ▼
Temperature Ambient Storage Min.	243.15 <u>K</u> ▼
Temperature Ambient Storage Max.	323.15 <u>K</u> ▼

Classification

Product Pressure Range	Rough Vacuum: 1000 mbar - 1 mbar
High / Medium / Rough Vacuum Classification	Rough Vacuum Pump
Dry or Wet Pump	Wet
Vacuum Pump Technology	Liquid Ring Pump

Lubricants

Grease Type	DIN51825 K25-30
-------------	-----------------

Variants

variantLrpMaterialOfConstruction	CI
	CI - Cast Iron

Material of Construction

Material Of Construction	Grey cast iron, Carbon steel, Spheroidal graphite (ductile) cast iron, Stainless steel 420, Silicon carbide, Stainless steel 316, EPDM, Compressed fibre, Polyester urethane, Ball, PTFE
--------------------------	--



SHR22500 - Liquid Ring Vacuum Pump CI

Part Number: **A80170000**

Specifications

Connection Vacuum Inlet Flange	DN 200
Connection vacuum outlet flange	DN 200
Cooling Method	Water Cooling
Pressure Ultimate	3000.00 <u>Pa</u> ▼
Power Total Rated	1.320×10^5 <u>W</u> ▼

Variant

Explore the range of variants given below to compare the product

	SHORT DESCRIPTION	PART NUMBER
<input checked="" type="radio"/>	SHR22500 - CI	A80170000
<input type="radio"/>	SHR22500 - SS	A80171000
<input type="radio"/>	SHR22500 - SS fitted	A80175000
<input type="radio"/>	SHR22500 - CI+2%Ni DIN FLANGE LRP	NR7112000

Liquid Ring Pumps Double-Stage Plate

Liquid ring vacuum pumps are positive displacement pumps that use a ring of liquid to create a seal between the vanes or impeller and the pump housing, creating a vacuum and pumping gas or vapor out of a chamber. They are rugged, reliable and widely used in applications ranging from chemical processing, paper and pulp industry, power generation, and wastewater treatment. They excel at handling condensable vapors and liquid slugs, making them ideal for wet applications with high levels of contamination.

Discover our cutting-edge Liquid Ring Vacuum Pumps, EHR Series and SHR Series, meticulously designed by Edwards.

Tailored for the most demanding applications in process industries, our liquid ring pump range comprises both one and two-stage machines, ensuring optimum efficiency across a broad vacuum range. With capacities reaching up to 40,000 m³/h in one stage and 7,500 m³/h in two-stage models, these pumps deliver powerful performance.

HR

For rough vacuum applications in the chemical and allied process industries.

The HR series, which includes the EHR and SHR models, brings you continuous reliable operation at low pressures. The range is designed to be tolerant of particulates and requires minimal maintenance, making it ideal for use in your power generation, chemical and process applications.

SHR22500 - CI

For rough vacuum applications in the chemical and allied process industries

The LR Series, including LR1A and LR1B single-stage models, are tolerant of particulates and operate with minimal maintenance and noise, making them ideal for your continuous operations in the power, chemical and process industries.

Features and Benefits

Efficiency and Power: Experience unparalleled efficiency with our one and two-stage liquid ring pumps, perfect for processes operating at various vacuum levels.

Innovation Redefined: Explore our ELRi range, a revolutionary line of intelligent and connected liquid ring vacuum pumps, integrating years of expertise and innovative technical advancements.

Customized Solutions: Benefit from our extensive experience in designing, engineering, and assembling bespoke liquid ring pump and hybrid vacuum systems. We provide tailored solutions for diverse process applications, meeting unique customer requirements.

Count on Edwards for top-quality Liquid Ring Pumps, designed to excel in the most challenging industrial environments. Enhance your processes with our reliable, efficient, and customized vacuum solutions.

SPECIFICATIONS ➤

General Product Information

Connection Vacuum Inlet Flange	DN 200
Weight	2635.00 <u>kg</u> ▼
Connection vacuum outlet flange	DN 200
Dimension Length	2.22 <u>m</u> ▼
Supply Frequency	50 Hz
	60 Hz
Dimension Height	1.30 <u>m</u> ▼
Dimension Width	0.940 <u>m</u> ▼
Noise Level	82.00 db(A)
Cooling Method	Water Cooling
Connection Cooling	3" BSPP (G) Female
motorEfficiencyClass	IE4
connectionVacuumFlangeCombined	DN 200 / DN 200

dimensionComments

The dimensions length, width and height try to describe the outer shape of this particular product in its typical orientation when standing on the ground. We always recommend checking the detailed dimensions given in 2D drawings in the instruction manual or the 3D shapes given in 3D models.

Performance Data

Power Total Rated	1.320×10^5 <u>W</u> ▼
-------------------	--------------------------------

Power Total Rated @60Hz	1.500×10^5 <u>W</u> ▼
-------------------------	--------------------------------

Power Total Rated @50Hz	1.320×10^5 <u>W</u> ▼
-------------------------	--------------------------------

Rotational Speed @50Hz Nominal	9.75 <u>Hz</u> ▼
--------------------------------	------------------

Pressure Ultimate	3000.00 <u>Pa</u> ▼
-------------------	---------------------

Rotational Speed @60Hz Nominal	10.83 <u>Hz</u> ▼
--------------------------------	-------------------

Capacity Air / Nitrogen @50Hz Nominal	1.25 <u>m³/s</u> ▼
---------------------------------------	-------------------------------

Capacity Air / Nitrogen @60Hz Nominal	1.36 <u>m³/s</u> ▼
---------------------------------------	-------------------------------

Operation Conditions - Limitations

Altitude Max.	1000.00 <u>m</u> ▼
---------------	--------------------

Temperature Inlet Gas Max.	353.15 <u>K</u> ▼
----------------------------	-------------------

pressureOutletMaxContinuous	1.200×10^5 <u>Pa</u> ▼
-----------------------------	---------------------------------

Environmental Conditions

Temperature 323.15 K ▾
Ambient Operation
Max

Temperature 253.15 K ▾
Ambient Operation
Min.

Temperature 243.15 K ▾
Ambient Storage
Min.

Temperature 323.15 K ▾
Ambient Storage
Max.

Classification

Product Pressure Range Rough Vacuum: 1000 mbar - 1 mbar

High / Medium / Rough Vacuum Classification Rough Vacuum Pump

Dry or Wet Pump Wet

Vacuum Pump Technology Liquid Ring Pump

Lubricants

Grease Type DIN51825 K25-30

Variants

variantLrpMaterialOfConstruction CI
CI - Cast Iron

Material of Construction

Material Of Construction Grey cast iron, Carbon steel, Spheroidal graphite (ductile) cast iron, Alloy steel, Silicon carbide, Stainless steel 316, EPDM, Compressed fibre, Polyester urethane, Ball, PTFE



SHR22500 - Liquid Ring Vacuum Pump CI/SS

Part Number: **A80175000**

Specifications

Connection Vacuum Inlet Flange	DN 200
Connection vacuum outlet flange	DN 200
Cooling Method	Water Cooling
Pressure Ultimate	3000.00 <u>Pa</u> ▼
Power Total Rated	1.320×10^5 <u>W</u> ▼

Variant

Explore the range of variants given below to compare the product

SHORT DESCRIPTION	PART NUMBER
<input type="radio"/> SHR22500 - CI	A80170000
<input type="radio"/> SHR22500 - SS	A80171000
<input checked="" type="radio"/> SHR22500 - SS fitted	A80175000
<input type="radio"/> SHR22500 - CI+2%Ni DIN FLANGE LRP	NR7112000

Liquid Ring Pumps Double-Stage Plate

Liquid ring vacuum pumps are positive displacement pumps that use a ring of liquid to create a seal between the vanes or impeller and the pump housing, creating a vacuum and pumping gas or vapor out of a chamber. They are rugged, reliable and widely used in applications ranging from chemical processing, paper and pulp industry, power generation, and wastewater treatment. They excel at handling condensable vapors and liquid slugs, making them ideal for wet applications with high levels of contamination.

Discover our cutting-edge Liquid Ring Vacuum Pumps, EHR Series and SHR Series, meticulously designed by Edwards.

Tailored for the most demanding applications in process industries, our liquid ring pump range comprises both one and two-stage machines, ensuring optimum efficiency across a broad vacuum range. With capacities reaching up to 40,000 m³/h in one stage and 7,500 m³/h in two-stage models, these pumps deliver powerful performance.

HR

For rough vacuum applications in the chemical and allied process industries.

The HR series, which includes the EHR and SHR models, brings you continuous reliable operation at low pressures. The range is designed to be tolerant of particulates and requires minimal maintenance, making it ideal for use in your power generation, chemical and process applications.

SHR22500 - SS fitted

For rough vacuum applications in the chemical and allied process industries

The LR Series, including LR1A and LR1B single-stage models, are tolerant of particulates and operate with minimal maintenance and noise, making them ideal for your continuous operations in the power, chemical and process industries.

Features and Benefits

Efficiency and Power: Experience unparalleled efficiency with our one and two-stage liquid ring pumps, perfect for processes operating at various vacuum levels.

Innovation Redefined: Explore our ELRi range, a revolutionary line of intelligent and connected liquid ring vacuum pumps, integrating years of expertise and innovative technical advancements.

Customized Solutions: Benefit from our extensive experience in designing, engineering, and assembling bespoke liquid ring pump and hybrid vacuum systems. We provide tailored solutions for diverse process applications, meeting unique customer requirements.

Count on Edwards for top-quality Liquid Ring Pumps, designed to excel in the most challenging industrial environments. Enhance your processes with our reliable, efficient, and customized vacuum solutions.

SPECIFICATIONS ➤

General Product Information

Connection Vacuum Inlet Flange	DN 200
Weight	2635.00 <u>kg</u> ▼
Connection vacuum outlet flange	DN 200
Dimension Length	2.22 <u>m</u> ▼
Supply Frequency	50 Hz
	60 Hz
Dimension Height	1.30 <u>m</u> ▼
Dimension Width	0.940 <u>m</u> ▼
Noise Level	82.00 db(A)
Cooling Method	Water Cooling
Connection Cooling	3" BSPP (G) Female
motorEfficiencyClass	IE4
connectionVacuumFlangeCombined	DN 200 / DN 200

dimensionComments

The dimensions length, width and height try to describe the outer shape of this particular product in its typical orientation when standing on the ground. We always recommend checking the detailed dimensions given in 2D drawings in the instruction manual or the 3D shapes given in 3D models.

Performance Data

Power Total Rated	1.320×10^5 <u>W</u> ▼
-------------------	--------------------------------

Power Total Rated @60Hz	1.500×10^5 <u>W</u> ▼
-------------------------	--------------------------------

Power Total Rated @50Hz	1.320×10^5 <u>W</u> ▼
-------------------------	--------------------------------

Rotational Speed @50Hz Nominal	9.75 <u>Hz</u> ▼
--------------------------------	------------------

Pressure Ultimate	3000.00 <u>Pa</u> ▼
-------------------	---------------------

Rotational Speed @60Hz Nominal	10.83 <u>Hz</u> ▼
--------------------------------	-------------------

Capacity Air / Nitrogen @50Hz Nominal	1.25 <u>m³/s</u> ▼
---------------------------------------	-------------------------------

Capacity Air / Nitrogen @60Hz Nominal	1.36 <u>m³/s</u> ▼
---------------------------------------	-------------------------------

Operation Conditions - Limitations

Altitude Max.	1000.00 <u>m</u> ▼
---------------	--------------------

Temperature Inlet Gas Max.	353.15 <u>K</u> ▼
----------------------------	-------------------

pressureOutletMaxContinuous	1.200×10^5 <u>Pa</u> ▼
-----------------------------	---------------------------------

Environmental Conditions

Temperature 323.15 K ▾
Ambient Operation
Max

Temperature 253.15 K ▾
Ambient Operation
Min.

Temperature 243.15 K ▾
Ambient Storage
Min.

Temperature 323.15 K ▾
Ambient Storage
Max.

Classification

Product Pressure Range Rough Vacuum: 1000 mbar - 1 mbar

High / Medium / Rough Vacuum Classification Rough Vacuum Pump

Dry or Wet Pump Wet

Vacuum Pump Technology Liquid Ring Pump

Lubricants

Grease Type DIN51825 K25-30

Variants

variantLrpMaterialOfConstruction CI/SS

Material of Construction

CI/SS - Stainless Fitted

Material Of Construction Grey cast iron, Carbon steel, Silicon carbide, Alloy steel 316, EPDM, Compressed fibre, Polyester urethane, Ball, PTFE

Pumps / Liquid Ring Pumps Double-Stage Plate / HR / SHR22500



SHR22500 - Liquid Ring Vacuum Pump SS

Part Number: **A80171000**

Specifications

Connection Vacuum Inlet Flange	DN 200
Connection vacuum outlet flange	DN 200
Cooling Method	Water Cooling
Pressure Ultimate	3000.00 <u>Pa</u> ▼
Power Total Rated	1.320×10^5 <u>W</u> ▼

Variant

Explore the range of variants given below to compare the product

SHORT DESCRIPTION	PART NUMBER
<input type="radio"/> SHR22500 - CI	A80170000
<input checked="" type="radio"/> SHR22500 - SS	A80171000
<input type="radio"/> SHR22500 - SS fitted	A80175000
<input type="radio"/> SHR22500 - CI+2%Ni DIN FLANGE LRP	NR7112000

Liquid Ring Pumps Double-Stage Plate

Liquid ring vacuum pumps are positive displacement pumps that use a ring of liquid to create a seal between the vanes or impeller and the pump housing, creating a vacuum and pumping gas or vapor out of a chamber. They are rugged, reliable and widely used in applications ranging from chemical processing, paper and pulp industry, power generation, and wastewater treatment. They excel at handling condensable vapors and liquid slugs, making them ideal for wet applications with high levels of contamination.

Discover our cutting-edge Liquid Ring Vacuum Pumps, EHR Series and SHR Series, meticulously designed by Edwards.

Tailored for the most demanding applications in process industries, our liquid ring pump range comprises both one and two-stage machines, ensuring optimum efficiency across a broad vacuum range. With capacities reaching up to 40,000 m³/h in one stage and 7,500 m³/h in two-stage models, these pumps deliver powerful performance.

HR

For rough vacuum applications in the chemical and allied process industries.

The HR series, which includes the EHR and SHR models, brings you continuous reliable operation at low pressures. The range is designed to be tolerant of particulates and requires minimal maintenance, making it ideal for use in your power generation, chemical and process applications.

SHR22500 - SS

For rough vacuum applications in the chemical and allied process industries

The LR Series, including LR1A and LR1B single-stage models, are tolerant of particulates and operate with minimal maintenance and noise, making them ideal for your continuous operations in the power, chemical and process industries.

Features and Benefits

Efficiency and Power: Experience unparalleled efficiency with our one and two-stage liquid ring pumps, perfect for processes operating at various vacuum levels.

Innovation Redefined: Explore our ELRi range, a revolutionary line of intelligent and connected liquid ring vacuum pumps, integrating years of expertise and innovative technical advancements.

Customized Solutions: Benefit from our extensive experience in designing, engineering, and assembling bespoke liquid ring pump and hybrid vacuum systems. We provide tailored solutions for diverse process applications, meeting unique customer requirements.

Count on Edwards for top-quality Liquid Ring Pumps, designed to excel in the most challenging industrial environments. Enhance your processes with our reliable, efficient, and customized vacuum solutions.

SPECIFICATIONS ➤

General Product Information

Connection Vacuum Inlet Flange	DN 200
Weight	2635.00 <u>kg</u> ▼
Connection vacuum outlet flange	DN 200
Dimension Length	2.22 <u>m</u> ▼
Supply Frequency	50 Hz
	60 Hz
Dimension Height	1.30 <u>m</u> ▼
Dimension Width	0.940 <u>m</u> ▼
Noise Level	82.00 db(A)
Cooling Method	Water Cooling
Connection Cooling	3" BSPP (G) Female
motorEfficiencyClass	IE4
connectionVacuumFlangeCombined	DN 200 / DN 200

dimensionComments

The dimensions length, width and height try to describe the outer shape of this particular product in its typical orientation when standing on the ground. We always recommend checking the detailed dimensions given in 2D drawings in the instruction manual or the 3D shapes given in 3D models.

Performance Data

Power Total Rated	1.320×10^5 <u>W</u> ▼
-------------------	--------------------------------

Power Total Rated @60Hz	1.500×10^5 <u>W</u> ▼
-------------------------	--------------------------------

Power Total Rated @50Hz	1.320×10^5 <u>W</u> ▼
-------------------------	--------------------------------

Rotational Speed @50Hz Nominal	9.75 <u>Hz</u> ▼
--------------------------------	------------------

Pressure Ultimate	3000.00 <u>Pa</u> ▼
-------------------	---------------------

Rotational Speed @60Hz Nominal	10.83 <u>Hz</u> ▼
--------------------------------	-------------------

Capacity Air / Nitrogen @50Hz Nominal	1.25 <u>m³/s</u> ▼
---------------------------------------	-------------------------------

Capacity Air / Nitrogen @60Hz Nominal	1.36 <u>m³/s</u> ▼
---------------------------------------	-------------------------------

Operation Conditions - Limitations

Altitude Max.	1000.00 <u>m</u> ▼
---------------	--------------------

Temperature Inlet Gas Max.	353.15 <u>K</u> ▼
----------------------------	-------------------

pressureOutletMaxContinuous	1.200×10^5 <u>Pa</u> ▼
-----------------------------	---------------------------------

Environmental Conditions

Temperature 323.15 K ▾
Ambient Operation
Max

Temperature 253.15 K ▾
Ambient Operation
Min.

Temperature 243.15 K ▾
Ambient Storage
Min.

Temperature 323.15 K ▾
Ambient Storage
Max.

Classification

Product Pressure Range Rough Vacuum: 1000 mbar - 1 mbar

High / Medium / Rough Vacuum Classification Rough Vacuum Pump

Dry or Wet Pump Wet

Vacuum Pump Technology Liquid Ring Pump

Lubricants

Grease Type DIN51825 K25-30

Variants

variantLrpMaterialOfConstruction SS
SS - Stainless Steel

Material of Construction

Material Of Construction Stainless steel 316, Silicon, Silicon carbide, FPM, Compressed fibre, Ball, PTFE

Pumps / Liquid Ring Pumps Double-Stage Plate / HR / SHR2400



Specifications

Connection Vacuum Inlet Flange	DN 65 ASA/ANSI 2 1/2"
Connection vacuum outlet flange	DN 65 ASA/ANSI 2 1/2"
Cooling Method	Water Cooling
Pressure Ultimate	3000.00 <u>Pa</u> ▼
Power Total Rated	22000.00 <u>W</u> ▼

Variant

Explore the range of variants given below to compare the product

	SHORT DESCRIPTION	PART NUMBER
<input checked="" type="radio"/>	SHR2400 - CI	A80060000
<input type="radio"/>	SHR2400 - SS	A80061000
<input type="radio"/>	SHR2400 - SS fitted	A80065000

PRODUCT DETAILS



Liquid Ring Pumps Double-Stage Plate

Liquid ring vacuum pumps are positive displacement pumps that use a ring of liquid to create a seal between the vanes or impeller and the pump housing, creating a vacuum and pumping gas or vapor out of a chamber. They are rugged, reliable and widely used in applications ranging from chemical processing, paper and pulp industry, power generation, and wastewater treatment. They excel at handling condensable vapors and liquid slugs, making them ideal for wet applications with high levels of contamination.

Discover our cutting-edge Liquid Ring Vacuum Pumps, EHR Series and SHR Series, meticulously designed by Edwards.

Tailored for the most demanding applications in process industries, our liquid ring pump range comprises both one and two-stage machines, ensuring optimum efficiency across a broad vacuum range. With capacities reaching up to 40,000 m³/h in one stage and 7,500 m³/h in two-stage models, these pumps deliver powerful performance.

HR

For rough vacuum applications in the chemical and allied process industries.

The HR series, which includes the EHR and SHR models, brings you continuous reliable operation at low pressures. The range is designed to be tolerant of particulates and requires minimal maintenance, making it ideal for use in your power generation, chemical and process applications.

SHR2400 - CI

For rough vacuum applications in the chemical and allied process industries

The LR Series, including LR1A and LR1B single-stage models, are tolerant of particulates and operate with minimal maintenance and noise, making them ideal for your continuous operations in the power, chemical and process industries.

Features and Benefits

Efficiency and Power: Experience unparalleled efficiency with our one and two-stage liquid ring pumps, perfect for processes operating at various vacuum levels.

Innovation Redefined: Explore our ELRi range, a revolutionary line of intelligent and connected liquid ring vacuum pumps, integrating years of expertise and innovative technical advancements.

Customized Solutions: Benefit from our extensive experience in designing, engineering, and assembling bespoke liquid ring pump and hybrid vacuum systems. We provide tailored solutions for diverse process applications, meeting unique customer requirements.

Count on Edwards for top-quality Liquid Ring Pumps, designed to excel in the most challenging industrial environments. Enhance your processes with our reliable, efficient, and customized vacuum solutions.

SPECIFICATIONS

➤

General Product Information

Connection Vacuum Inlet Flange	DN 65
	ASA/ANSI 2 1/2"
Weight	222.00 kg ▼
Connection vacuum outlet flange	DN 65
	ASA/ANSI 2 1/2"
Dimension Length	0.990 m ▼
Supply Frequency	50 Hz
	60 Hz
Dimension Height	0.570 m ▼
Dimension Width	0.430 m ▼

Noise Level	80.00 db(A)
Cooling Method	Water Cooling
Connection Cooling	3/4" BSPP (G) Female
motorEfficiencyClass	IE4
connectionVacuumFlangeCombined	DN 65 / DN 65
dimensionComments	<p>The dimensions length, width and height try to describe the outer shape of this particular product in its typical orientation when standing on the ground.</p> <p>We always recommend checking the detailed dimensions given in 2D drawings in the instruction manual or the 3D shapes given in 3D models.</p>

Performance Data

Power Total Rated	22000.00 <u>W</u> ▼
Power Total Rated @60Hz	30000.00 <u>W</u> ▼
Power Total Rated @50Hz	22000.00 <u>W</u> ▼
Rotational Speed @50Hz Nominal	24.50 <u>Hz</u> ▼
Pressure Ultimate	3000.00 <u>Pa</u> ▼
Rotational Speed @60Hz Nominal	29.00 <u>Hz</u> ▼
Capacity Air / Nitrogen @50Hz Nominal	0.169 <u>m³/s</u> ▼
Capacity Air / Nitrogen @60Hz Nominal	0.194 <u>m³/s</u> ▼

Operation Conditions - Limitations

Altitude Max.	1000.00 <u>m</u> ▼
Temperature Inlet Gas Max.	353.15 <u>K</u> ▼
pressureOutletMaxContinuous	1.200 × 10 ⁵ <u>Pa</u> ▼

Environmental Conditions

Temperature Ambient Operation Max	323.15 <u>K</u> ▼
Temperature Ambient Operation Min.	253.15 <u>K</u> ▼
Temperature Ambient Storage Min.	243.15 <u>K</u> ▼
Temperature Ambient Storage Max.	323.15 <u>K</u> ▼

Classification

Product Pressure Range	Rough Vacuum: 1000 mbar - 1 mbar
High / Medium / Rough Vacuum Classification	Rough Vacuum Pump
Dry or Wet Pump	Wet
Vacuum Pump Technology	Liquid Ring Pump

Lubricants

Grease Type	DIN51825 K25-30
-------------	-----------------

Variants

variantLrpMaterialOfConstruction	CI
	CI - Cast Iron

Material of Construction

Material Of Construction	Grey cast iron, Carbon steel, Spheroidal graphite (ductile) cast iron, Stainless steel 420, Silicon carbide, Stainless steel 316, EPDM, Compressed fibre, Polyester urethane, Ball, PTFE
--------------------------	--



SHR2400 - Liquid Ring Vacuum Pump CI/SS

Part Number: **A80065000**

Specifications

Connection Vacuum Inlet Flange	DN 65 ASA/ANSI 2 1/2"
Connection vacuum outlet flange	DN 65 ASA/ANSI 2 1/2"
Cooling Method	Water Cooling
Pressure Ultimate	3000.00 <u>Pa</u> ▼
Power Total Rated	22000.00 <u>W</u> ▼

Variant

Explore the range of variants given below to compare the product

SHORT DESCRIPTION	PART NUMBER
<input type="radio"/> SHR2400 - CI	A80060000
<input type="radio"/> SHR2400 - SS	A80061000
<input checked="" type="radio"/> SHR2400 - SS fitted	A80065000

Liquid Ring Pumps Double-Stage Plate

Liquid ring vacuum pumps are positive displacement pumps that use a ring of liquid to create a seal between the vanes or impeller and the pump housing, creating a vacuum and pumping gas or vapor out of a chamber. They are rugged, reliable and widely used in applications ranging from chemical processing, paper and pulp industry, power generation, and wastewater treatment. They excel at handling condensable vapors and liquid slugs, making them ideal for wet applications with high levels of contamination.

Discover our cutting-edge Liquid Ring Vacuum Pumps, EHR Series and SHR Series, meticulously designed by Edwards.

Tailored for the most demanding applications in process industries, our liquid ring pump range comprises both one and two-stage machines, ensuring optimum efficiency across a broad vacuum range. With capacities reaching up to 40,000 m³/h in one stage and 7,500 m³/h in two-stage models, these pumps deliver powerful performance.

HR

For rough vacuum applications in the chemical and allied process industries.

The HR series, which includes the EHR and SHR models, brings you continuous reliable operation at low pressures. The range is designed to be tolerant of particulates and requires minimal maintenance, making it ideal for use in your power generation, chemical and process applications.

SHR2400 - SS fitted

For rough vacuum applications in the chemical and allied process industries

The LR Series, including LR1A and LR1B single-stage models, are tolerant of particulates and operate with minimal maintenance and noise, making them ideal for your continuous operations in the power, chemical and process industries.

Features and Benefits

Efficiency and Power: Experience unparalleled efficiency with our one and two-stage liquid ring pumps, perfect for processes operating at various vacuum levels.

Innovation Redefined: Explore our ELRi range, a revolutionary line of intelligent and connected liquid ring vacuum pumps, integrating years of expertise and innovative technical advancements.

Customized Solutions: Benefit from our extensive experience in designing, engineering, and assembling bespoke liquid ring pump and hybrid vacuum systems. We provide tailored solutions for diverse process applications, meeting unique customer requirements.

Count on Edwards for top-quality Liquid Ring Pumps, designed to excel in the most challenging industrial environments. Enhance your processes with our reliable, efficient, and customized vacuum solutions.

SPECIFICATIONS ➤

General Product Information

Connection Vacuum Inlet Flange	DN 65
	ASA/ANSI 2 1/2"
Weight	222.00 <u>kg</u> ▼
Connection vacuum outlet flange	DN 65
	ASA/ANSI 2 1/2"
Dimension Length	0.990 <u>m</u> ▼
Supply Frequency	50 Hz
	60 Hz
Dimension Height	0.570 <u>m</u> ▼
Dimension Width	0.430 <u>m</u> ▼

Noise Level	80.00 db(A)
Cooling Method	Water Cooling
Connection Cooling	3/4" BSPP (G) Female
motorEfficiencyClass	IE4
connectionVacuumFlangeCombined	DN 65 / DN 65
dimensionComments	<p>The dimensions length, width and height try to describe the outer shape of this particular product in its typical orientation when standing on the ground.</p> <p>We always recommend checking the detailed dimensions given in 2D drawings in the instruction manual or the 3D shapes given in 3D models.</p>

Performance Data

Power Total Rated	22000.00 <u>W</u> ▼
Power Total Rated @60Hz	30000.00 <u>W</u> ▼
Power Total Rated @50Hz	22000.00 <u>W</u> ▼
Rotational Speed @50Hz Nominal	24.50 <u>Hz</u> ▼
Pressure Ultimate	3000.00 <u>Pa</u> ▼
Rotational Speed @60Hz Nominal	29.00 <u>Hz</u> ▼
Capacity Air / Nitrogen @50Hz Nominal	0.169 <u>m³/s</u> ▼
Capacity Air / Nitrogen @60Hz Nominal	0.194 <u>m³/s</u> ▼

Operation Conditions - Limitations

Altitude Max.	1000.00 <u>m</u> ▼
Temperature Inlet Gas Max.	353.15 <u>K</u> ▼
pressureOutletMaxContinuous	1.200 × 10 ⁵ <u>Pa</u> ▼

Environmental Conditions

Temperature Ambient Operation Max	323.15 <u>K</u> ▼
Temperature Ambient Operation Min.	253.15 <u>K</u> ▼
Temperature Ambient Storage Min.	243.15 <u>K</u> ▼
Temperature Ambient Storage Max.	323.15 <u>K</u> ▼

Classification

Product Pressure Range	Rough Vacuum: 1000 mbar - 1 mbar
High / Medium / Rough Vacuum Classification	Rough Vacuum Pump
Dry or Wet Pump	Wet
Vacuum Pump Technology	Liquid Ring Pump

Lubricants

Grease Type	DIN51825 K25-30
-------------	-----------------

Variants

variantLrpMaterialOfConstruction	CI/SS
	CI/SS - Stainless Fitted

Material of Construction

Material Of Construction	Grey cast iron, Carbon steel, Silicon carbide, Stainless steel 420, EPDM, Compressed fibre, Polyester urethane, Ball, PTFE
--------------------------	--



SHR2400 - Liquid Ring Vacuum Pump SS

Part Number: **A80061000**

Specifications

Connection Vacuum Inlet Flange	DN 65 ASA/ANSI 2 1/2"
Connection vacuum outlet flange	DN 65 ASA/ANSI 2 1/2"
Cooling Method	Water Cooling
Pressure Ultimate	3000.00 <u>Pa</u> ▼
Power Total Rated	22000.00 <u>W</u> ▼

Variant

Explore the range of variants given below to compare the product

	SHORT DESCRIPTION	PART NUMBER
<input type="radio"/>	SHR2400 - CI	A80060000
<input checked="" type="radio"/>	SHR2400 - SS	A80061000
<input type="radio"/>	SHR2400 - SS fitted	A80065000

Liquid Ring Pumps Double-Stage Plate

Liquid ring vacuum pumps are positive displacement pumps that use a ring of liquid to create a seal between the vanes or impeller and the pump housing, creating a vacuum and pumping gas or vapor out of a chamber. They are rugged, reliable and widely used in applications ranging from chemical processing, paper and pulp industry, power generation, and wastewater treatment. They excel at handling condensable vapors and liquid slugs, making them ideal for wet applications with high levels of contamination.

Discover our cutting-edge Liquid Ring Vacuum Pumps, EHR Series and SHR Series, meticulously designed by Edwards.

Tailored for the most demanding applications in process industries, our liquid ring pump range comprises both one and two-stage machines, ensuring optimum efficiency across a broad vacuum range. With capacities reaching up to 40,000 m³/h in one stage and 7,500 m³/h in two-stage models, these pumps deliver powerful performance.

HR

For rough vacuum applications in the chemical and allied process industries.

The HR series, which includes the EHR and SHR models, brings you continuous reliable operation at low pressures. The range is designed to be tolerant of particulates and requires minimal maintenance, making it ideal for use in your power generation, chemical and process applications.

SHR2400 - SS

For rough vacuum applications in the chemical and allied process industries

The LR Series, including LR1A and LR1B single-stage models, are tolerant of particulates and operate with minimal maintenance and noise, making them ideal for your continuous operations in the power, chemical and process industries.

Features and Benefits

Efficiency and Power: Experience unparalleled efficiency with our one and two-stage liquid ring pumps, perfect for processes operating at various vacuum levels.

Innovation Redefined: Explore our ELRi range, a revolutionary line of intelligent and connected liquid ring vacuum pumps, integrating years of expertise and innovative technical advancements.

Customized Solutions: Benefit from our extensive experience in designing, engineering, and assembling bespoke liquid ring pump and hybrid vacuum systems. We provide tailored solutions for diverse process applications, meeting unique customer requirements.

Count on Edwards for top-quality Liquid Ring Pumps, designed to excel in the most challenging industrial environments. Enhance your processes with our reliable, efficient, and customized vacuum solutions.

SPECIFICATIONS ➤

General Product Information

Connection Vacuum Inlet Flange	DN 65
	ASA/ANSI 2 1/2"
Weight	222.00 <u>kg</u> ▼
Connection vacuum outlet flange	DN 65
	ASA/ANSI 2 1/2"
Dimension Length	0.990 <u>m</u> ▼
Supply Frequency	50 Hz
	60 Hz
Dimension Height	0.570 <u>m</u> ▼
Dimension Width	0.430 <u>m</u> ▼

Noise Level	80.00 db(A)
Cooling Method	Water Cooling
Connection Cooling	3/4" BSPP (G) Female
motorEfficiencyClass	IE4
connectionVacuumFlangeCombined	DN 65 / DN 65
dimensionComments	<p>The dimensions length, width and height try to describe the outer shape of this particular product in its typical orientation when standing on the ground.</p> <p>We always recommend checking the detailed dimensions given in 2D drawings in the instruction manual or the 3D shapes given in 3D models.</p>

Performance Data

Power Total Rated	22000.00 <u>W</u> ▼
Power Total Rated @60Hz	30000.00 <u>W</u> ▼
Power Total Rated @50Hz	22000.00 <u>W</u> ▼
Rotational Speed @50Hz Nominal	24.50 <u>Hz</u> ▼
Pressure Ultimate	3000.00 <u>Pa</u> ▼
Rotational Speed @60Hz Nominal	29.00 <u>Hz</u> ▼
Capacity Air / Nitrogen @50Hz Nominal	0.169 <u>m³/s</u> ▼
Capacity Air / Nitrogen @60Hz Nominal	0.194 <u>m³/s</u> ▼

Operation Conditions - Limitations

Altitude Max.	1000.00 <u>m</u> ▼
Temperature Inlet Gas Max.	353.15 <u>K</u> ▼
pressureOutletMaxContinuous	1.200×10^5 <u>Pa</u> ▼

Environmental Conditions

Temperature Ambient Operation Max	323.15 <u>K</u> ▼
Temperature Ambient Operation Min.	253.15 <u>K</u> ▼
Temperature Ambient Storage Min.	243.15 <u>K</u> ▼
Temperature Ambient Storage Max.	323.15 <u>K</u> ▼

Classification

Product Pressure Range	Rough Vacuum: 1000 mbar - 1 mbar
High / Medium / Rough Vacuum Classification	Rough Vacuum Pump
Dry or Wet Pump	Wet
Vacuum Pump Technology	Liquid Ring Pump

Lubricants

Grease Type	DIN51825 K25-30
-------------	-----------------

Variants

variantLrpMaterialOfConstruction	SS
	SS - Stainless Steel

Material of Construction

Material Of Construction	Stainless steel 316, Silicon, Silicon carbide, FPM, Compressed fibre, Ball, PTFE
--------------------------	--



SHR2750 - Liquid Ring Vacuum Pump CI

Part Number: **A80090000**

Specifications

Connection Vacuum Inlet Flange	DN 100 ASA/ANSI 4"
Connection vacuum outlet flange	DN 100 ASA/ANSI 4"
Cooling Method	Water Cooling
Pressure Ultimate	3000.00 <u>Pa</u> ▼
Power Total Rated	45000.00 <u>W</u> ▼

Variant

Explore the range of variants given below to compare the product

	SHORT DESCRIPTION	PART NUMBER
<input checked="" type="radio"/>	SHR2750 - CI	A80090000
<input type="radio"/>	SHR2750 - SS	A80091000
<input type="radio"/>	SHR2750 - SS fitted	A80095000

Liquid Ring Pumps Double-Stage Plate

Liquid ring vacuum pumps are positive displacement pumps that use a ring of liquid to create a seal between the vanes or impeller and the pump housing, creating a vacuum and pumping gas or vapor out of a chamber. They are rugged, reliable and widely used in applications ranging from chemical processing, paper and pulp industry, power generation, and wastewater treatment. They excel at handling condensable vapors and liquid slugs, making them ideal for wet applications with high levels of contamination.

Discover our cutting-edge Liquid Ring Vacuum Pumps, EHR Series and SHR Series, meticulously designed by Edwards.

Tailored for the most demanding applications in process industries, our liquid ring pump range comprises both one and two-stage machines, ensuring optimum efficiency across a broad vacuum range. With capacities reaching up to 40,000 m³/h in one stage and 7,500 m³/h in two-stage models, these pumps deliver powerful performance.

HR

For rough vacuum applications in the chemical and allied process industries.

The HR series, which includes the EHR and SHR models, brings you continuous reliable operation at low pressures. The range is designed to be tolerant of particulates and requires minimal maintenance, making it ideal for use in your power generation, chemical and process applications.

SHR2750 - CI

For rough vacuum applications in the chemical and allied process industries

The LR Series, including LR1A and LR1B single-stage models, are tolerant of particulates and operate with minimal maintenance and noise, making them ideal for your continuous operations in the power, chemical and process industries.

Features and Benefits

Efficiency and Power: Experience unparalleled efficiency with our one and two-stage liquid ring pumps, perfect for processes operating at various vacuum levels.

Innovation Redefined: Explore our ELRi range, a revolutionary line of intelligent and connected liquid ring vacuum pumps, integrating years of expertise and innovative technical advancements.

Customized Solutions: Benefit from our extensive experience in designing, engineering, and assembling bespoke liquid ring pump and hybrid vacuum systems. We provide tailored solutions for diverse process applications, meeting unique customer requirements.

Count on Edwards for top-quality Liquid Ring Pumps, designed to excel in the most challenging industrial environments. Enhance your processes with our reliable, efficient, and customized vacuum solutions.

SPECIFICATIONS ➤

General Product Information

Connection Vacuum Inlet Flange	DN 100
	ASA/ANSI 4"
Weight	584.00 <u>kg</u> ▼
Connection vacuum outlet flange	DN 100
	ASA/ANSI 4"
Dimension Length	1.28 <u>m</u> ▼
Supply Frequency	50 Hz
	60 Hz
Dimension Height	0.770 <u>m</u> ▼
Dimension Width	0.600 <u>m</u> ▼

Noise Level	82.00 db(A)
Cooling Method	Water Cooling
Connection Cooling	2" BSPP (G) Female
motorEfficiencyClass	IE4
connectionVacuumFlangeCombined	DN 100 / DN 100
dimensionComments	<p>The dimensions length, width and height try to describe the outer shape of this particular product in its typical orientation when standing on the ground.</p> <p>We always recommend checking the detailed dimensions given in 2D drawings in the instruction manual or the 3D shapes given in 3D models.</p>

Performance Data

Power Total Rated	45000.00 <u>W</u> ▼
Power Total Rated @60Hz	55000.00 <u>W</u> ▼
Power Total Rated @50Hz	45000.00 <u>W</u> ▼
Rotational Speed @50Hz Nominal	16.33 <u>Hz</u> ▼
Pressure Ultimate	3000.00 <u>Pa</u> ▼
Rotational Speed @60Hz Nominal	19.58 <u>Hz</u> ▼
Capacity Air / Nitrogen @50Hz Nominal	0.342 <u>m³/s</u> ▼
Capacity Air / Nitrogen @60Hz Nominal	0.400 <u>m³/s</u> ▼

Operation Conditions - Limitations

Altitude Max.	1000.00 <u>m</u> ▼
Temperature Inlet Gas Max.	353.15 <u>K</u> ▼
pressureOutletMaxContinuous	1.200×10^5 <u>Pa</u> ▼

Environmental Conditions

Temperature Ambient Operation Max	323.15 <u>K</u> ▼
Temperature Ambient Operation Min.	253.15 <u>K</u> ▼
Temperature Ambient Storage Min.	243.15 <u>K</u> ▼
Temperature Ambient Storage Max.	323.15 <u>K</u> ▼

Classification

Product Pressure Range	Rough Vacuum: 1000 mbar - 1 mbar
High / Medium / Rough Vacuum Classification	Rough Vacuum Pump
Dry or Wet Pump	Wet
Vacuum Pump Technology	Liquid Ring Pump

Lubricants

Grease Type	DIN51825 K25-30
-------------	-----------------

Variants

variantLrpMaterialOfConstruction	CI
	CI - Cast Iron

Material of Construction

Material Of Construction	Grey cast iron, Carbon steel, Spheroidal graphite (ductile) cast iron, Stainless steel 420, Silicon carbide, Stainless steel 316, EPDM, Compressed fibre, Polyester urethane, Ball, PTFE
--------------------------	--



SHR2950 - Liquid Ring Vacuum Pump SS

Part Number: **A80101000**

Specifications

Connection Vacuum Inlet Flange	DN 100 ASA/ANSI 4"
Connection vacuum outlet flange	DN 100 ASA/ANSI 4"
Cooling Method	Water Cooling
Pressure Ultimate	3000.00 <u>Pa</u> ▼
Power Total Rated	55000.00 <u>W</u> ▼

Variant

Explore the range of variants given below to compare the product

SHORT DESCRIPTION	PART NUMBER
<input type="radio"/> SHR2950 - CI	A80100000
<input checked="" type="radio"/> SHR2950 - SS	A80101000
<input type="radio"/> SHR2950 - SS fitted	A80105000

Liquid Ring Pumps Double-Stage Plate

Liquid ring vacuum pumps are positive displacement pumps that use a ring of liquid to create a seal between the vanes or impeller and the pump housing, creating a vacuum and pumping gas or vapor out of a chamber. They are rugged, reliable and widely used in applications ranging from chemical processing, paper and pulp industry, power generation, and wastewater treatment. They excel at handling condensable vapors and liquid slugs, making them ideal for wet applications with high levels of contamination.

Discover our cutting-edge Liquid Ring Vacuum Pumps, EHR Series and SHR Series, meticulously designed by Edwards.

Tailored for the most demanding applications in process industries, our liquid ring pump range comprises both one and two-stage machines, ensuring optimum efficiency across a broad vacuum range. With capacities reaching up to 40,000 m³/h in one stage and 7,500 m³/h in two-stage models, these pumps deliver powerful performance.

HR

For rough vacuum applications in the chemical and allied process industries.

The HR series, which includes the EHR and SHR models, brings you continuous reliable operation at low pressures. The range is designed to be tolerant of particulates and requires minimal maintenance, making it ideal for use in your power generation, chemical and process applications.

SHR2950 - SS

For rough vacuum applications in the chemical and allied process industries

The LR Series, including LR1A and LR1B single-stage models, are tolerant of particulates and operate with minimal maintenance and noise, making them ideal for your continuous operations in the power, chemical and process industries.

Features and Benefits

Efficiency and Power: Experience unparalleled efficiency with our one and two-stage liquid ring pumps, perfect for processes operating at various vacuum levels.

Innovation Redefined: Explore our ELRi range, a revolutionary line of intelligent and connected liquid ring vacuum pumps, integrating years of expertise and innovative technical advancements.

Customized Solutions: Benefit from our extensive experience in designing, engineering, and assembling bespoke liquid ring pump and hybrid vacuum systems. We provide tailored solutions for diverse process applications, meeting unique customer requirements.

Count on Edwards for top-quality Liquid Ring Pumps, designed to excel in the most challenging industrial environments. Enhance your processes with our reliable, efficient, and customized vacuum solutions.

SPECIFICATIONS ➤

General Product Information

Connection Vacuum Inlet Flange	DN 100
	ASA/ANSI 4"
Weight	760.00 <u>kg</u> ▼
Connection vacuum outlet flange	DN 100
	ASA/ANSI 4"
Dimension Length	1.38 <u>m</u> ▼
Supply Frequency	50 Hz
	60 Hz
Dimension Height	0.770 <u>m</u> ▼
Dimension Width	0.600 <u>m</u> ▼

Noise Level	82.00 db(A)
Cooling Method	Water Cooling
Connection Cooling	2" BSPP (G) Female
motorEfficiencyClass	IE4
connectionVacuumFlangeCombined	DN 100 / DN 100
dimensionComments	<p>The dimensions length, width and height try to describe the outer shape of this particular product in its typical orientation when standing on the ground.</p> <p>We always recommend checking the detailed dimensions given in 2D drawings in the instruction manual or the 3D shapes given in 3D models.</p>

Performance Data

Power Total Rated	55000.00 <u>W</u> ▼
Power Total Rated @60Hz	75000.00 <u>W</u> ▼
Power Total Rated @50Hz	55000.00 <u>W</u> ▼
Rotational Speed @50Hz Nominal	16.33 <u>Hz</u> ▼
Pressure Ultimate	3000.00 <u>Pa</u> ▼
Rotational Speed @60Hz Nominal	19.58 <u>Hz</u> ▼
Capacity Air / Nitrogen @50Hz Nominal	0.467 <u>m³/s</u> ▼
Capacity Air / Nitrogen @60Hz Nominal	0.533 <u>m³/s</u> ▼

Operation Conditions - Limitations

Altitude Max.	1000.00 <u>m</u> ▼
Temperature Inlet Gas Max.	353.15 <u>K</u> ▼
pressureOutletMaxContinuous	1.200×10^5 <u>Pa</u> ▼

Environmental Conditions

Temperature Ambient Operation Max	323.15 <u>K</u> ▼
Temperature Ambient Operation Min.	253.15 <u>K</u> ▼
Temperature Ambient Storage Min.	243.15 <u>K</u> ▼
Temperature Ambient Storage Max.	323.15 <u>K</u> ▼

Classification

Product Pressure Range	Rough Vacuum: 1000 mbar - 1 mbar
High / Medium / Rough Vacuum Classification	Rough Vacuum Pump
Dry or Wet Pump	Wet
Vacuum Pump Technology	Liquid Ring Pump

Lubricants

Grease Type	DIN51825 K25-30
-------------	-----------------

Variants

variantLrpMaterialOfConstruction	SS
	SS - Stainless Steel

Material of Construction

Material Of Construction	Stainless steel 316, Silicon, Silicon carbide, FPM, Compressed fibre, Ball, PTFE
--------------------------	--

Anti Slavery

Safety Data Sheets

Test Leak Form

© Copyright Edwards 2024. All rights reserved.



SHR2950 - Liquid Ring Vacuum Pump CI

Part Number: **A80100000**

Specifications

Connection Vacuum Inlet Flange	DN 100 ASA/ANSI 4"
Connection vacuum outlet flange	DN 100 ASA/ANSI 4"
Cooling Method	Water Cooling
Pressure Ultimate	3000.00 <u>Pa</u> ▼
Power Total Rated	55000.00 <u>W</u> ▼

Variant

Explore the range of variants given below to compare the product

	SHORT DESCRIPTION	PART NUMBER
<input checked="" type="radio"/>	SHR2950 - CI	A80100000
<input type="radio"/>	SHR2950 - SS	A80101000
<input type="radio"/>	SHR2950 - SS fitted	A80105000

Liquid Ring Pumps Double-Stage Plate

Liquid ring vacuum pumps are positive displacement pumps that use a ring of liquid to create a seal between the vanes or impeller and the pump housing, creating a vacuum and pumping gas or vapor out of a chamber. They are rugged, reliable and widely used in applications ranging from chemical processing, paper and pulp industry, power generation, and wastewater treatment. They excel at handling condensable vapors and liquid slugs, making them ideal for wet applications with high levels of contamination.

Discover our cutting-edge Liquid Ring Vacuum Pumps, EHR Series and SHR Series, meticulously designed by Edwards.

Tailored for the most demanding applications in process industries, our liquid ring pump range comprises both one and two-stage machines, ensuring optimum efficiency across a broad vacuum range. With capacities reaching up to 40,000 m³/h in one stage and 7,500 m³/h in two-stage models, these pumps deliver powerful performance.

HR

For rough vacuum applications in the chemical and allied process industries.

The HR series, which includes the EHR and SHR models, brings you continuous reliable operation at low pressures. The range is designed to be tolerant of particulates and requires minimal maintenance, making it ideal for use in your power generation, chemical and process applications.

SHR2950 - CI

For rough vacuum applications in the chemical and allied process industries

The LR Series, including LR1A and LR1B single-stage models, are tolerant of particulates and operate with minimal maintenance and noise, making them ideal for your continuous operations in the power, chemical and process industries.

Features and Benefits

Efficiency and Power: Experience unparalleled efficiency with our one and two-stage liquid ring pumps, perfect for processes operating at various vacuum levels.

Innovation Redefined: Explore our ELRi range, a revolutionary line of intelligent and connected liquid ring vacuum pumps, integrating years of expertise and innovative technical advancements.

Customized Solutions: Benefit from our extensive experience in designing, engineering, and assembling bespoke liquid ring pump and hybrid vacuum systems. We provide tailored solutions for diverse process applications, meeting unique customer requirements.

Count on Edwards for top-quality Liquid Ring Pumps, designed to excel in the most challenging industrial environments. Enhance your processes with our reliable, efficient, and customized vacuum solutions.

SPECIFICATIONS ➤

General Product Information

Connection Vacuum Inlet Flange	DN 100
	ASA/ANSI 4"
Weight	760.00 <u>kg</u> ▼
Connection vacuum outlet flange	DN 100
	ASA/ANSI 4"
Dimension Length	1.38 <u>m</u> ▼
Supply Frequency	50 Hz
	60 Hz
Dimension Height	0.770 <u>m</u> ▼
Dimension Width	0.600 <u>m</u> ▼

Noise Level	82.00 db(A)
Cooling Method	Water Cooling
Connection Cooling	2" BSPP (G) Female
motorEfficiencyClass	IE4
connectionVacuumFlangeCombined	DN 100 / DN 100
dimensionComments	<p>The dimensions length, width and height try to describe the outer shape of this particular product in its typical orientation when standing on the ground.</p> <p>We always recommend checking the detailed dimensions given in 2D drawings in the instruction manual or the 3D shapes given in 3D models.</p>

Performance Data

Power Total Rated	55000.00 <u>W</u> ▼
Power Total Rated @60Hz	75000.00 <u>W</u> ▼
Power Total Rated @50Hz	55000.00 <u>W</u> ▼
Rotational Speed @50Hz Nominal	16.33 <u>Hz</u> ▼
Pressure Ultimate	3000.00 <u>Pa</u> ▼
Rotational Speed @60Hz Nominal	19.58 <u>Hz</u> ▼
Capacity Air / Nitrogen @50Hz Nominal	0.467 <u>m³/s</u> ▼
Capacity Air / Nitrogen @60Hz Nominal	0.533 <u>m³/s</u> ▼

Operation Conditions - Limitations

Altitude Max.	1000.00 <u>m</u> ▼
Temperature Inlet Gas Max.	353.15 <u>K</u> ▼
pressureOutletMaxContinuous	1.200×10^5 <u>Pa</u> ▼

Environmental Conditions

Temperature Ambient Operation Max	323.15 <u>K</u> ▼
Temperature Ambient Operation Min.	253.15 <u>K</u> ▼
Temperature Ambient Storage Min.	243.15 <u>K</u> ▼
Temperature Ambient Storage Max.	323.15 <u>K</u> ▼

Classification

Product Pressure Range	Rough Vacuum: 1000 mbar - 1 mbar
High / Medium / Rough Vacuum Classification	Rough Vacuum Pump
Dry or Wet Pump	Wet
Vacuum Pump Technology	Liquid Ring Pump

Lubricants

Grease Type	DIN51825 K25-30
-------------	-----------------

Variants

variantLrpMaterialOfConstruction	CI
	CI - Cast Iron

Material of Construction

Material Of Construction	Grey cast iron, Carbon steel, Spheroidal graphite (ductile) cast iron, Stainless steel 420, Silicon carbide, Stainless steel 316, EPDM, Compressed fibre, Polyester urethane, Ball, PTFE
--------------------------	--



SHR2950 - Liquid Ring Vacuum Pump CI/SS

Part Number: **A80105000**

Availability
Click For Availability

[Request A Quote](#)

Specifications

Connection Vacuum Inlet Flange	DN 100 ASA/ANSI 4"
Connection vacuum outlet flange	DN 100 ASA/ANSI 4"
Cooling Method	Water Cooling
Pressure Ultimate	3000.00 <u>Pa</u> ▼
Power Total Rated	55000.00 <u>W</u> ▼

Variant
Explore the range of variants given below to compare the product

SHORT DESCRIPTION	PART NUMBER
<input type="radio"/> SHR2950 - CI	A80100000
<input type="radio"/> SHR2950 - SS	A80101000
<input checked="" type="radio"/> SHR2950 - SS fitted	A80105000

PRODUCT DETAILS



Liquid Ring Pumps Double-Stage Plate

Liquid ring vacuum pumps are positive displacement pumps that use a ring of liquid to create a seal between the vanes or impeller and the pump housing, creating a vacuum and pumping gas or vapor out of a chamber. They are rugged, reliable and widely used in applications ranging from chemical processing, paper and pulp industry, power generation, and wastewater treatment. They excel at handling condensable vapors and liquid slugs, making them ideal for wet applications with high levels of contamination.

Discover our cutting-edge Liquid Ring Vacuum Pumps, EHR Series and SHR Series, meticulously designed by Edwards.

Tailored for the most demanding applications in process industries, our liquid ring pump range comprises both one and two-stage machines, ensuring optimum efficiency across a broad vacuum range. With capacities reaching up to 40,000 m³/h in one stage and 7,500 m³/h in two-stage models, these pumps deliver powerful performance.

HR

For rough vacuum applications in the chemical and allied process industries.

The HR series, which includes the EHR and SHR models, brings you continuous reliable operation at low pressures. The range is designed to be tolerant of particulates and requires minimal maintenance, making it ideal for use in your power generation, chemical and process applications.

SHR2950 - SS fitted

For rough vacuum applications in the chemical and allied process industries

The LR Series, including LR1A and LR1B single-stage models, are tolerant of particulates and operate with minimal maintenance and noise, making them ideal for your continuous operations in the power, chemical and process industries.

Features and Benefits

Efficiency and Power: Experience unparalleled efficiency with our one and two-stage liquid ring pumps, perfect for processes operating at various vacuum levels.

Innovation Redefined: Explore our ELRi range, a revolutionary line of intelligent and connected liquid ring vacuum pumps, integrating years of expertise and innovative technical advancements.

Customized Solutions: Benefit from our extensive experience in designing, engineering, and assembling bespoke liquid ring pump and hybrid vacuum systems. We provide tailored solutions for diverse process applications, meeting unique customer requirements.

Count on Edwards for top-quality Liquid Ring Pumps, designed to excel in the most challenging industrial environments. Enhance your processes with our reliable, efficient, and customized vacuum solutions.

SPECIFICATIONS ➤

General Product Information

Connection Vacuum Inlet Flange	DN 100
	ASA/ANSI 4"
Weight	760.00 kg ▼
Connection vacuum outlet flange	DN 100
	ASA/ANSI 4"
Dimension Length	1.38 m ▼
Supply Frequency	50 Hz
	60 Hz
Dimension Height	0.770 m ▼
Dimension Width	0.600 m ▼

Noise Level	82.00 db(A)
Cooling Method	Water Cooling
Connection Cooling	2" BSPP (G) Female
motorEfficiencyClass	IE4
connectionVacuumFlangeCombined	DN 100 / DN 100
dimensionComments	<p>The dimensions length, width and height try to describe the outer shape of this particular product in its typical orientation when standing on the ground.</p> <p>We always recommend checking the detailed dimensions given in 2D drawings in the instruction manual or the 3D shapes given in 3D models.</p>

Performance Data

Power Total Rated	55000.00 <u>W</u> ▼
Power Total Rated @60Hz	75000.00 <u>W</u> ▼
Power Total Rated @50Hz	55000.00 <u>W</u> ▼
Rotational Speed @50Hz Nominal	16.33 <u>Hz</u> ▼
Pressure Ultimate	3000.00 <u>Pa</u> ▼
Rotational Speed @60Hz Nominal	19.58 <u>Hz</u> ▼
Capacity Air / Nitrogen @50Hz Nominal	0.467 <u>m³/s</u> ▼
Capacity Air / Nitrogen @60Hz Nominal	0.533 <u>m³/s</u> ▼

Operation Conditions - Limitations

Altitude Max.	1000.00 <u>m</u> ▼
Temperature Inlet Gas Max.	353.15 <u>K</u> ▼
pressureOutletMaxContinuous	1.200×10^5 <u>Pa</u> ▼

Environmental Conditions

Temperature Ambient Operation Max	323.15 <u>K</u> ▼
Temperature Ambient Operation Min.	253.15 <u>K</u> ▼
Temperature Ambient Storage Min.	243.15 <u>K</u> ▼
Temperature Ambient Storage Max.	323.15 <u>K</u> ▼

Classification

Product Pressure Range	Rough Vacuum: 1000 mbar - 1 mbar
High / Medium / Rough Vacuum Classification	Rough Vacuum Pump
Dry or Wet Pump	Wet
Vacuum Pump Technology	Liquid Ring Pump

Lubricants

Grease Type	DIN51825 K25-30
-------------	-----------------

Variants

variantLrpMaterialOfConstruction	CI/SS
	CI/SS - Stainless Fitted

Material of Construction

Material Of Construction	Grey cast iron, Carbon steel, Silicon carbide, Stainless steel 420, EPDM, Compressed fibre, Polyester urethane, Ball, PTFE
--------------------------	--



По вопросам продаж и поддержки обращайтесь:

Алматы (727)345-47-04
Ангарск (3955)60-70-56
Архангельск (8182)63-90-72
Астрахань (8512)99-46-04
Барнаул (3852)73-04-60
Белгород (4722)40-23-64
Благовещенск (4162)22-76-07
Брянск (4832)59-03-52
Владивосток (423)249-28-31
Владикавказ (8672)28-90-48
Владимир (4922)49-43-18
Волгоград (844)278-03-48
Вологда (8172)26-41-59
Воронеж (473)204-51-73
Екатеринбург (343)384-55-89

Иваново (4932)77-34-06
Ижевск (3412)26-03-58
Иркутск (395)279-98-46
Казань (843)206-01-48
Калининград (4012)72-03-81
Калуга (4842)92-23-67
Кемерово (3842)65-04-62
Киров (8332)68-02-04
Коломна (4966)23-41-49
Кострома (4942)77-07-48
Краснодар (861)203-40-90
Красноярск (391)204-63-61
Курск (4712)77-13-04
Курган (3522)50-90-47
Липецк (4742)52-20-81

Магнитогорск (3519)55-03-13
Москва (495)268-04-70
Мурманск (8152)59-64-93
Набережные Челны (8552)20-53-41
Нижегород (831)429-08-12
Новокузнецк (3843)20-46-81
Ноябрьск (3496)41-32-12
Новосибирск (383)227-86-73
Омск (3812)21-46-40
Орел (4862)44-53-42
Оренбург (3532)37-68-04
Пенза (8412)22-31-16
Петрозаводск (8142)55-98-37
Псков (8112)59-10-37
Пермь (342)205-81-47

Ростов-на-Дону (863)308-18-15
Рязань (4912)46-61-64
Самара (846)206-03-16
Санкт-Петербург (812)309-46-40
Саратов (845)249-38-78
Севастополь (8692)22-31-93
Саранск (8342)22-96-24
Симферополь (3652)67-13-56
Смоленск (4812)29-41-54
Сочи (862)225-72-31
Ставрополь (8652)20-65-13
Сургут (3462)77-98-35
Сыктывкар (8212)25-95-17
Тамбов (4752)50-40-97
Тверь (4822)63-31-35

Тольятти (8482)63-91-07
Томск (3822)98-41-53
Тула (4872)33-79-87
Тюмень (3452)66-21-18
Ульяновск (8422)24-23-59
Улан-Удэ (3012)59-97-51
Уфа (347)229-48-12
Хабаровск (4212)92-98-04
Чебоксары (8352)28-53-07
Челябинск (351)202-03-61
Череповец (8202)49-02-64
Чита (3022)38-34-83
Якутск (4112)23-90-97
Ярославль (4852)69-52-93

Россия +7(495)268-04-70

Казахстан +7(727)345-47-04

Беларусь +(375)257-127-884

Узбекистан +998(71)205-18-59

Киргизия +996(312)96-26-47

эл.почта: ewc@nt-rt.ru || сайт: <https://edwards.nt-rt.ru/>